

Happy time of Ubuntu

—Ubuntuなひととき



2013/09/14
Open Source Conference 2013 Hokkaido
Hajime MIZUNO @ Ubuntu Japanese Team

Self Introduction

—お前誰よ?



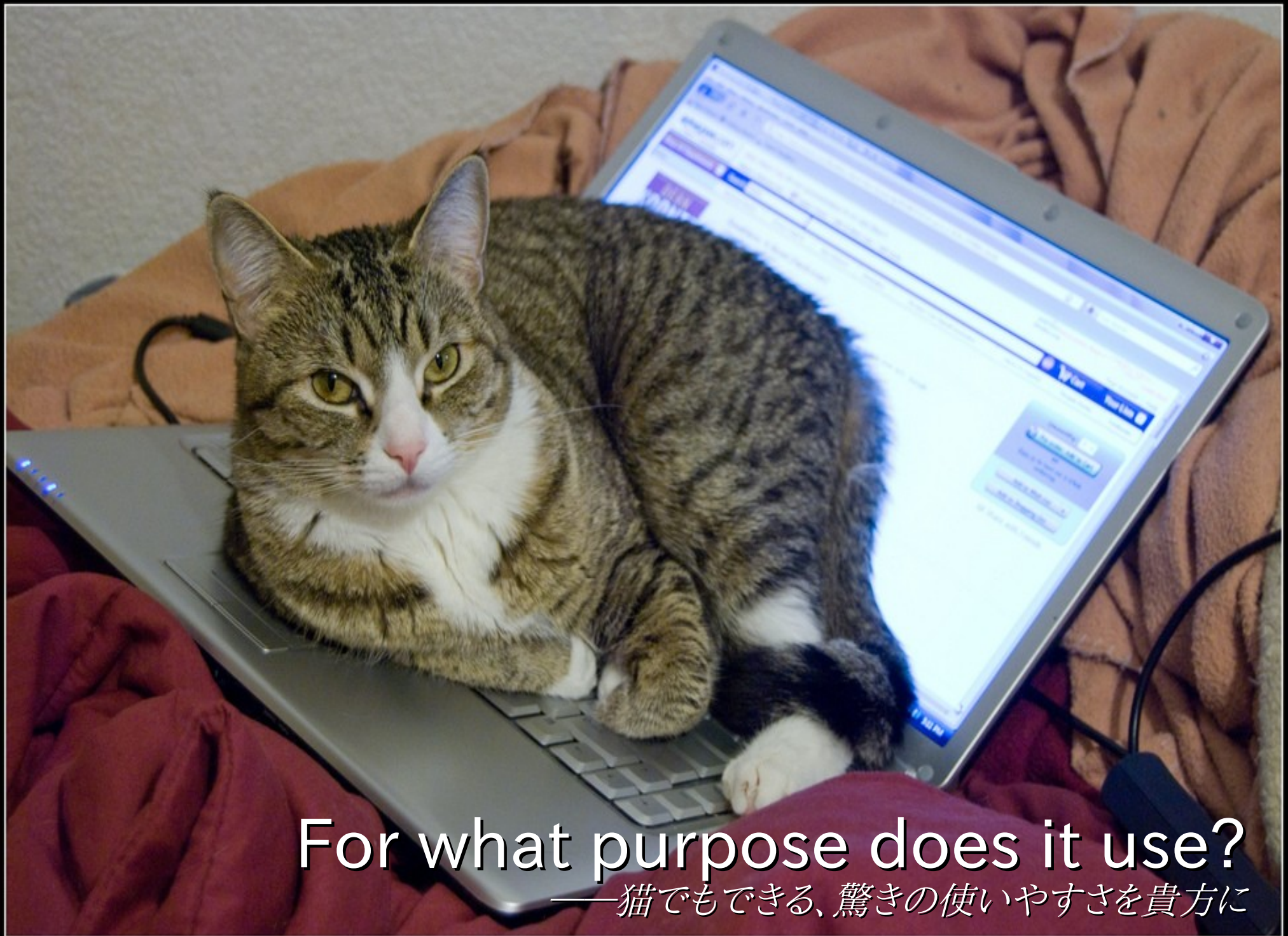
Are you using Ubuntu?

—Ubuntu使ってますか

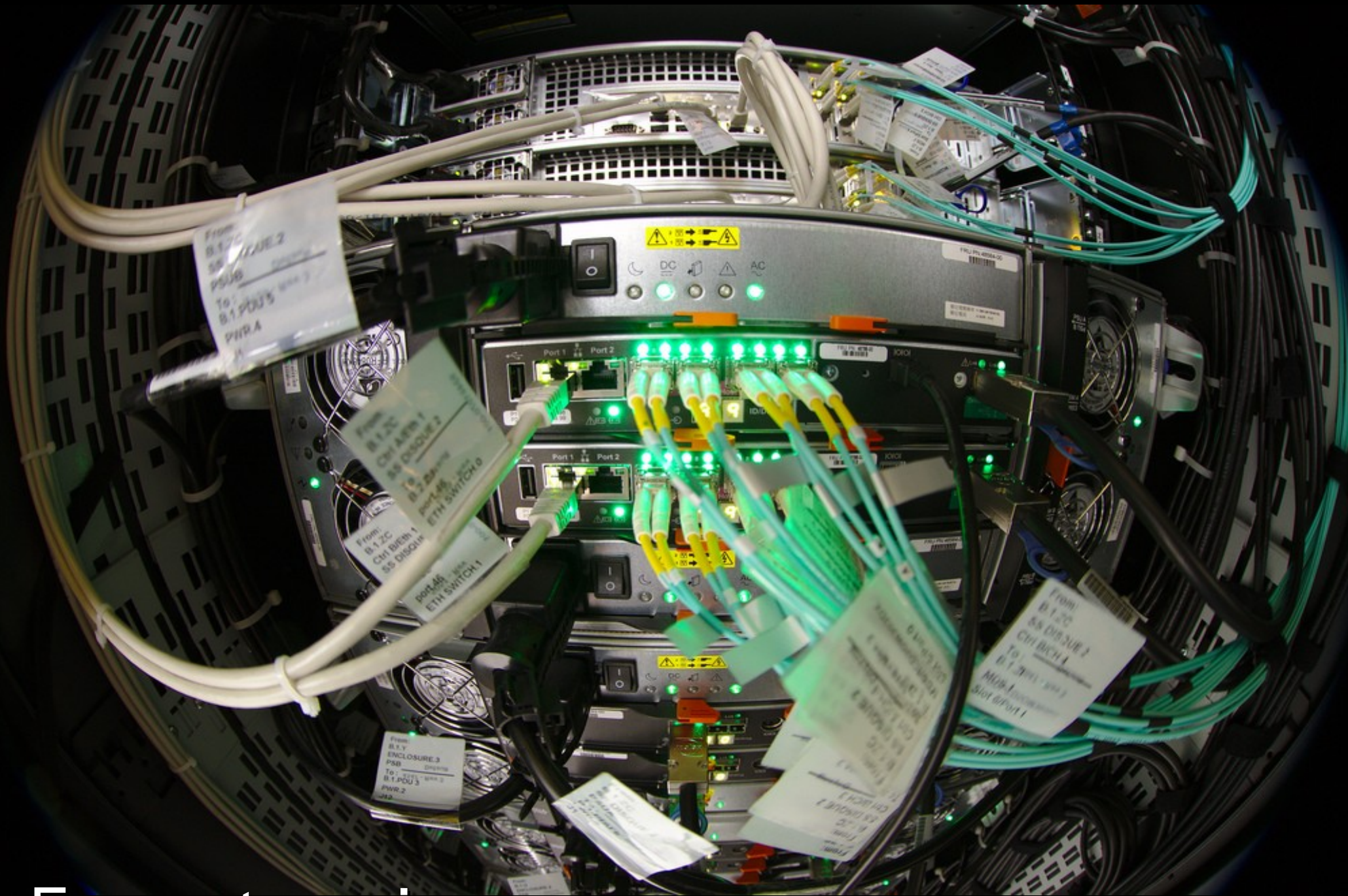




Are you using Tablet?
—PCとかオワコンじゃね？



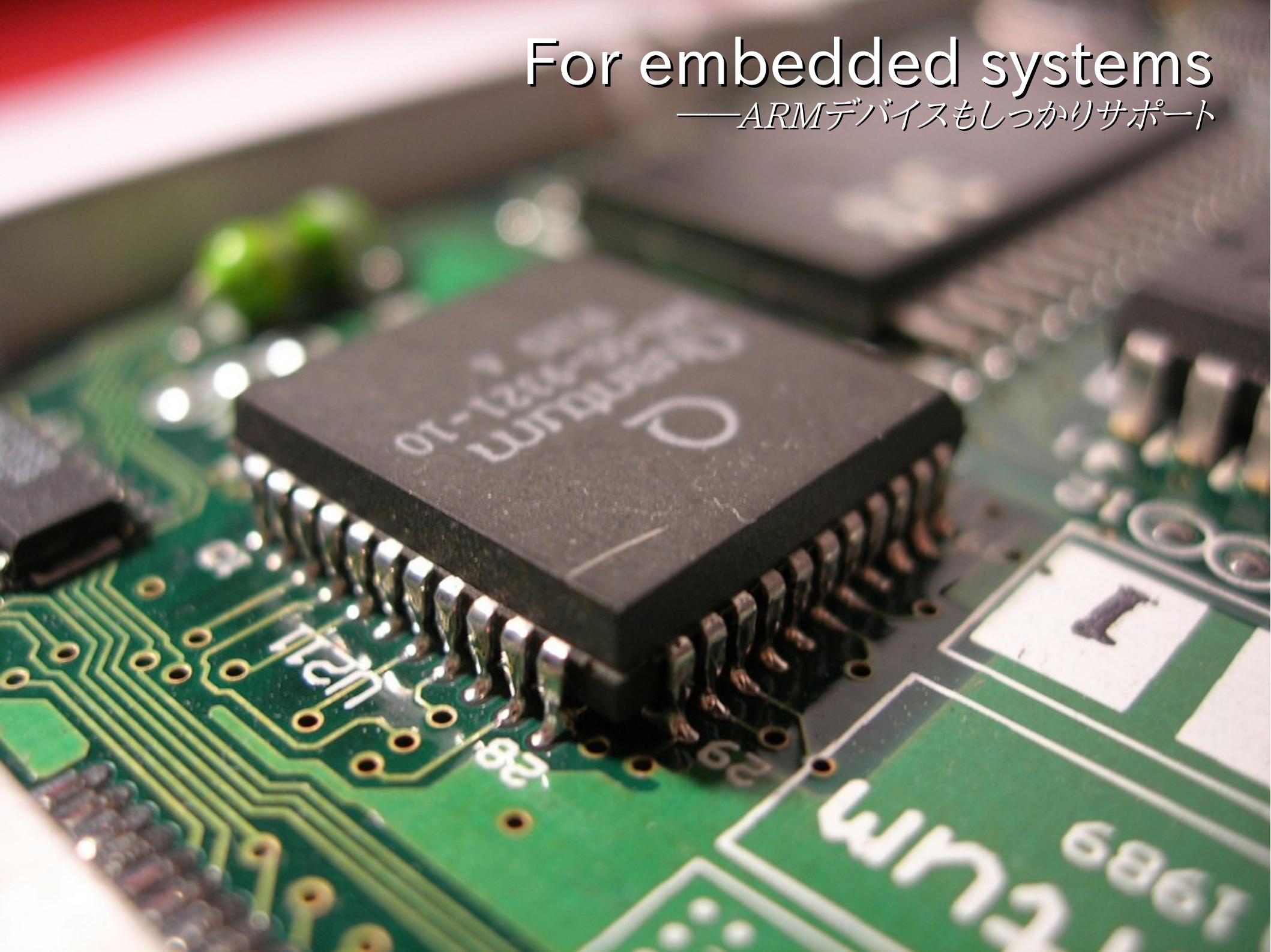
For what purpose does it use?
——猫でもできる、驚きの使いやすさを貴方に



For enterprise server
—あなたのサービスを24時間守ります

For embedded systems

—ARMデバイスもしっかりサポート



The feature of Ubuntu

—それは補助輪つき自転車ではない





Virtualization and Cloud Computing

—奇跡も、魔法も、あるんだよ

Phone and Tablet

—その力をあなたの手の中に



Unity, Ubuntu Desktop

—新世代のデスクトップインターフェイス

The image displays the Ubuntu Unity desktop environment. The background is a scenic view of a bamboo forest with a stone staircase leading up a hillside, bordered by a traditional bamboo fence. The desktop interface is dark-themed. At the top, there is a search bar (Dash) with a magnifying glass icon. Below the search bar, the results are categorized into two sections: 'アプリケーション' (Applications) and 'ファイルとフォルダー' (Files and Folders). The 'アプリケーション' section shows icons for '画像ビューアー' (Image Viewer), 'ディスク' (Disks), 'LibreOffice Calc', 'ドキュメントビューアー' (Document Viewer), 'ビデオ' (Videos), and 'CompizConfig 設定マネージャ' (CompizConfig Settings Manager). The 'ファイルとフォルダー' section shows a grid of files and folders, including 'osc2013okinawa.odp', 'Martin Schmitt.jpg', 'typexnick.jpg', 'Dan McKay.jpg', 'Luis Alejandro Bernal Romero.jpg', 'Tiffa Day.jpg', 'Dennis van Zijlekom.jpg', 'Johan Larsson.jpg', 'Luis Argerich.jpg', 'Bert Kaufmann.jpg', 'Erich_Ferdinand_CC_B Y.jpg', and 'blumblaum.jpg'. At the bottom of the desktop, there is a dock with icons for Home, Dash, Files, Music, Camera, and Videos. The system tray in the top right corner shows various status icons and the time '19:26'. A '法律上の通知' (Legal notice) icon is visible in the bottom right corner of the desktop area.

Ubuntu Variation

—Kubuntu, Xubuntu, and more



Use Kubuntu

To use Kubuntu as a Live CD, put this CD in the CD drive and turn on or restart your computer.

To install Kubuntu, run the Live CD and click on the "Install" icon. The default installation will erase all existing software and data from your computer. If this is not what you want, follow the instructions carefully during installation.

To try Windows versions of some of the programs included in Kubuntu, put the CD in the drive while Windows is running.

Ubuntu Server and Juju

—それはまるで魔法のように



Ubuntu Cloud images

—クリックひとつで最新環境をデプロイ

Cloud image

The Ubuntu Cloud image can be run on your personal [Ubuntu Cloud](#), or modified, rebundled and uploaded to Amazon EC2. For further instruction on setting up a personal Ubuntu Cloud, see [Getting Started with Ubuntu Cloud](#)

There are three images available, each for a different type of computer:

32-bit Cloud image

For almost all PCs. This includes most machines with Intel/AMD/etc type processors and almost all computers that run Microsoft Windows, as well as newer Apple Macintosh systems based on Intel processors. Choose this if you are at all unsure.

64-bit Cloud image

Choose this to take full advantage of computers based on the AMD64 or EM64T architecture (e.g., Athlon64, Opteron, EM64T Xeon, Core 2). If you have a non-64-bit processor made by AMD, or if you need full support for 32-bit code, use the Intel x86 images instead.

32-bit ARMHF Cloud image

For ARMv7 processors and above. Userland is compiled with Hard Float on.

Amazon EC2 Published AMIs

The images have been published to [Amazon EC2](#), and can be used immediately with no need to download anything. See the table below for the AMI ids. For further instruction on getting started with Amazon EC2, see the [EC2 Starters Guide](#).

Region	arch	root store	ami	ec2 command
ap-northeast-1	64-bit	ebs	Launch ami-c9109bc8	<code>ec2-run-instances ami-c9109bc8 -t t1.micro --region ap-northeast-1 --key \${EC2_KEYPAIR_AP_NORTHEAST_1}</code>
ap-northeast-1	64-bit	instance	Launch ami-bd109bbc	<code>ec2-run-instances ami-bd109bbc -t m1.small --region ap-northeast-1 --key \${EC2_KEYPAIR_AP_NORTHEAST_1}</code>
ap-northeast-1	32-bit	ebs	Launch ami-c7109bc6	<code>ec2-run-instances ami-c7109bc6 -t t1.micro --region ap-northeast-1 --key \${EC2_KEYPAIR_AP_NORTHEAST_1}</code>
ap-northeast-1	32-bit	instance	Launch ami-23109b22	<code>ec2-run-instances ami-23109b22 -t m1.small --region ap-northeast-1 --key \${EC2_KEYPAIR_AP_NORTHEAST_1}</code>
ap-southeast-1	64-bit	ebs	Launch ami-b0eda3e2	<code>ec2-run-instances ami-b0eda3e2 -t t1.micro --region ap-southeast-1 --key \${EC2_KEYPAIR_AP_SOUTHEAST_1}</code>
ap-southeast-1	64-bit	instance	Launch ami-8aeda3d8	<code>ec2-run-instances ami-8aeda3d8 -t m1.small --region ap-southeast-1 --key \${EC2_KEYPAIR_AP_SOUTHEAST_1}</code>



Anytime, Anywhere, Anyone
—あらゆる場所で、誰もが使えるOSを

The Edge of Smartphone

—Ubuntuベースのスーパースマートフォン



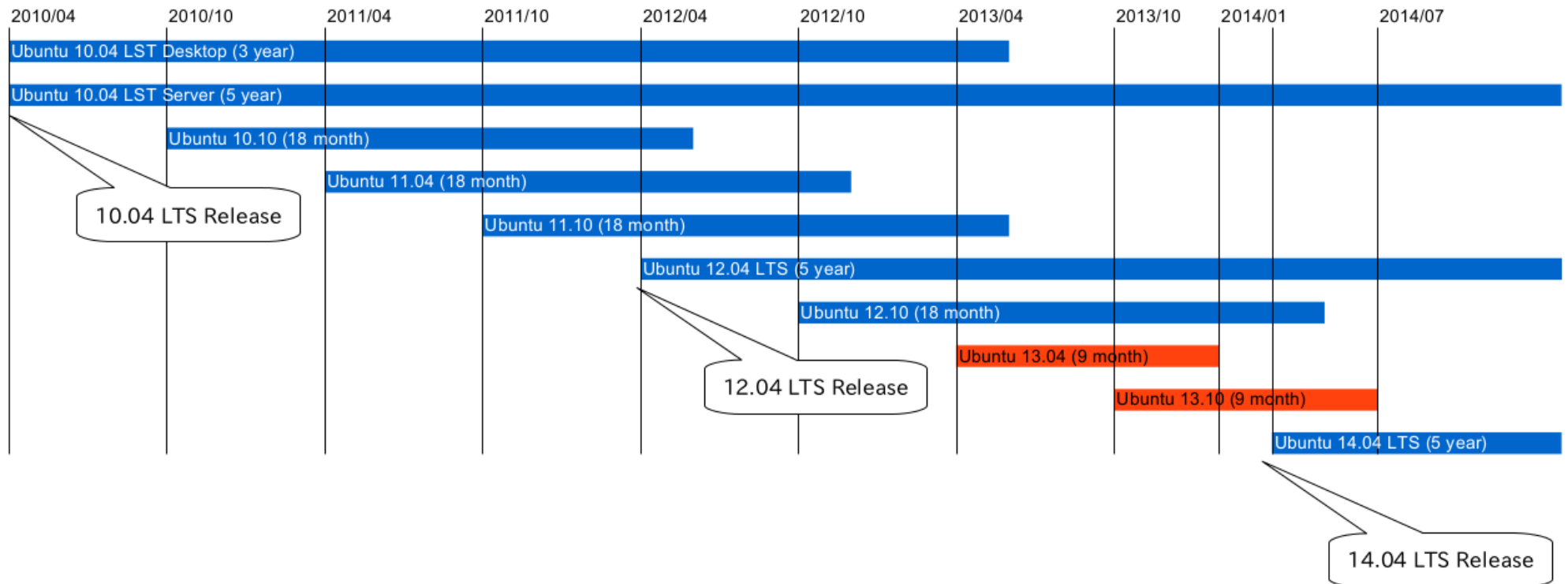
Cutting-Edge Ubuntu

—Ubuntu最新事情



non-LTS support is 9 months

—アップグレードは忘れずに





Ubuntu 13.10

—生意気なサンショウウオ

Japanese Input Method for Saucy

—IBus 1.5とその事情





Replace from X Window System

—Mirディスプレイサーバーの登場

for Next Generation

—次世代Unity, Unity 8登場



Any Question?

—何か質問ある？



Photos

Andy Melton
CollegeDegrees360
Dan McKay
Daniel Pádua
Dennis van Zuijlekom
Johan Larsson
John Baer
Luis Alejandro Bernal Romero
Martin Schmitt
Max Khokhlov
NASA Earth Observatory
NASA Goddard Space Flight Center
Tiffa Day
blumblaum
support
typexnick
Usrnametaken
Tamaki Sono

Creative Commons Attribution 2.0 Generic