

Happy time of Ubuntu

—Ubuntuなひととき

2013/07/06

Open Source Conference 2013 Okinawa
Hajime MIZUNO @ Ubuntu Japanese Team

Self Introduction

—お前誰よ？



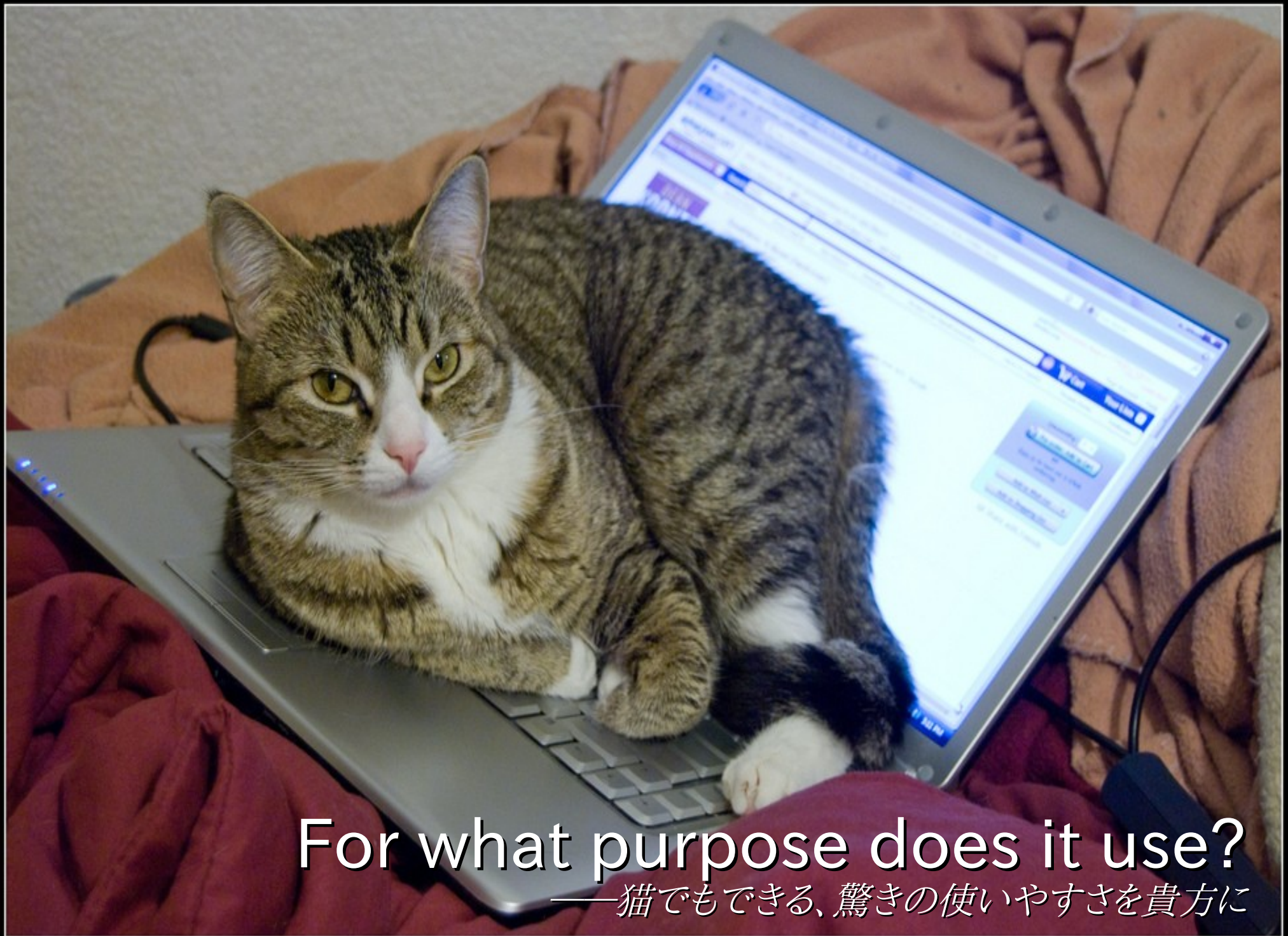
Are you using Ubuntu?

—Ubuntu使ってますか

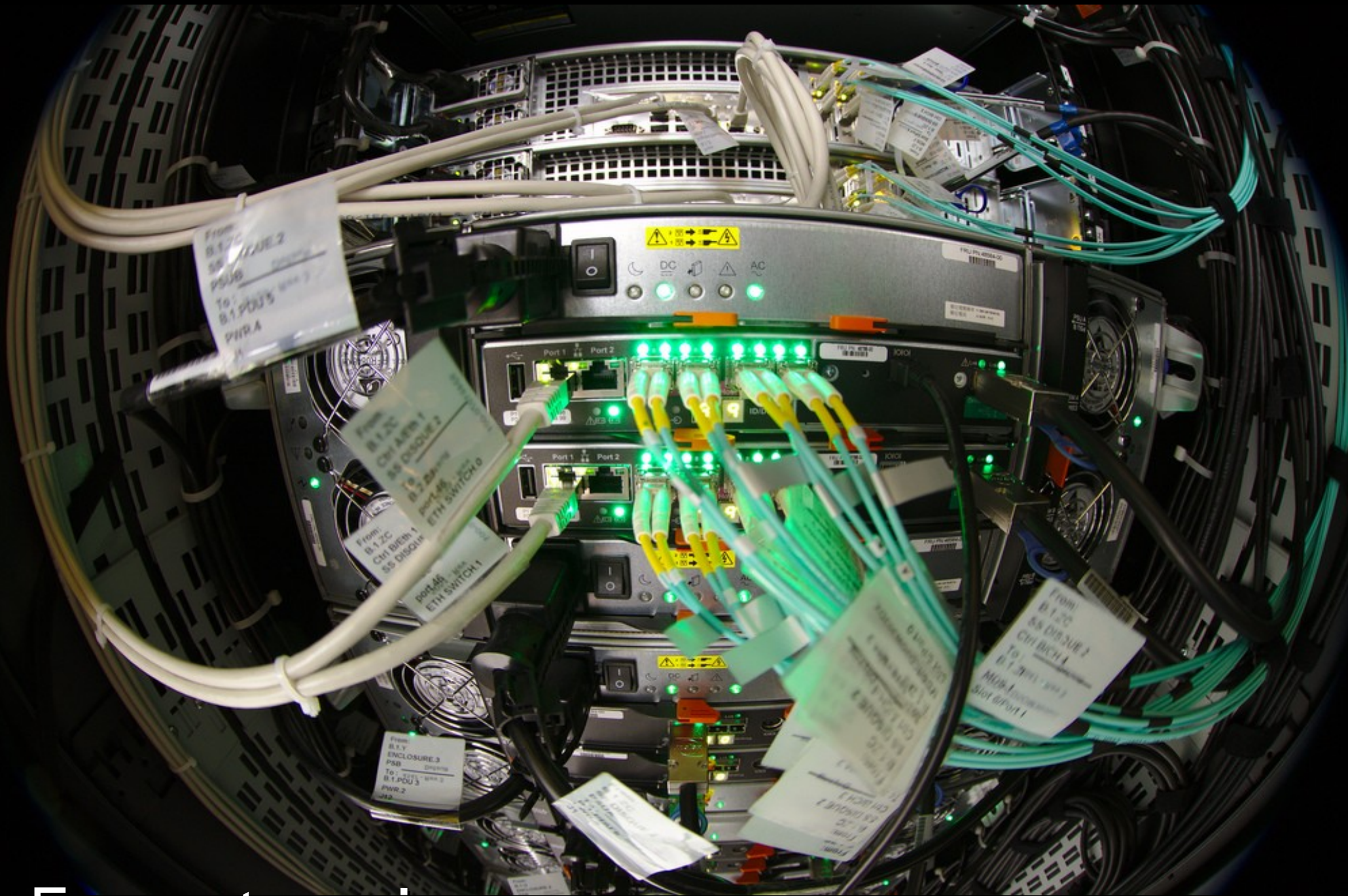








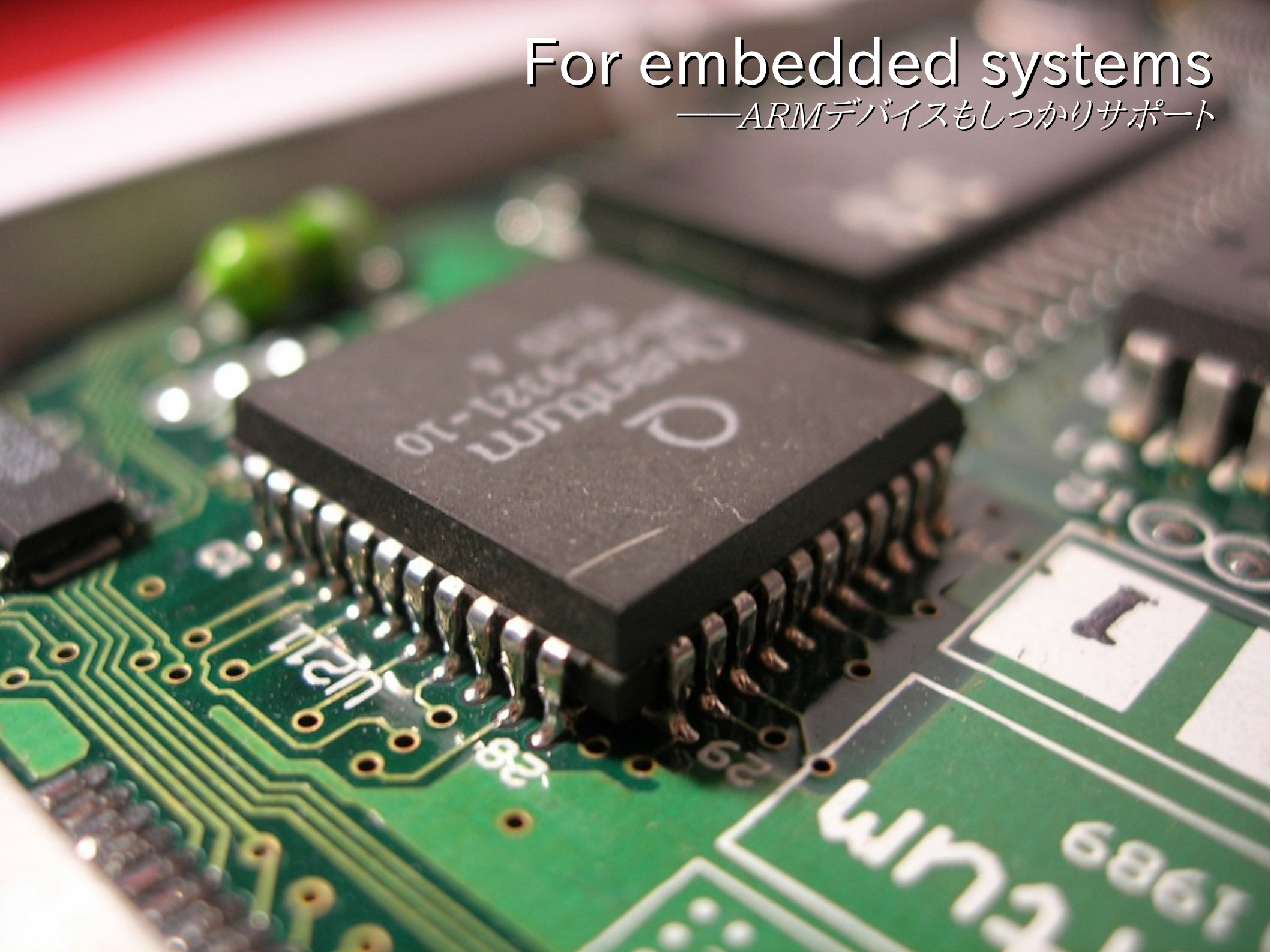
For what purpose does it use?
——猫でもできる、驚きの使いやすさを貴方に



For enterprise server
—あなたのサービスを24時間守ります

For embedded systems

—ARMデバイスもしっかりサポート



The feature of Ubuntu

—それは補助輪つき自転車ではない





Virtualization and Cloud Computing

——奇跡も、魔法も、あるんだよ

Phone and Tablet

—その力をあなたの手の中に



Ubuntu Variation

—Kubuntu, Xubuntu, and more



Use Kubuntu

To use Kubuntu as a Live CD, put this CD in the CD drive and turn on or restart your computer.

To install Kubuntu, run the Live CD and click on the "Install" icon. The default installation will erase all existing software and data from your computer. If this is not what you want, follow the instructions carefully during installation.

To try Windows versions of some of the programs included in Kubuntu, put the CD in the drive while Windows is running.

Ubuntu Server and Juju

—それはまるで魔法のように



Ubuntu Cloud images

—クリックひとつで最新環境をデプロイ

Cloud image

The Ubuntu Cloud image can be run on your personal [Ubuntu Cloud](#), or modified, rebundled and uploaded to Amazon EC2. For further instruction on setting up a personal Ubuntu Cloud, see [Getting Started with Ubuntu Cloud](#)

There are three images available, each for a different type of computer:

32-bit Cloud image

For almost all PCs. This includes most machines with Intel/AMD/etc type processors and almost all computers that run Microsoft Windows, as well as newer Apple Macintosh systems based on Intel processors. Choose this if you are at all unsure.

64-bit Cloud image

Choose this to take full advantage of computers based on the AMD64 or EM64T architecture (e.g., Athlon64, Opteron, EM64T Xeon, Core 2). If you have a non-64-bit processor made by AMD, or if you need full support for 32-bit code, use the Intel x86 images instead.

32-bit ARMHF Cloud image

For ARMv7 processors and above. Userland is compiled with Hard Float on.

Amazon EC2 Published AMIs

The images have been published to [Amazon EC2](#), and can be used immediately with no need to download anything. See the table below for the AMI ids. For further instruction on getting started with Amazon EC2, see the [EC2 Starters Guide](#).

Region	arch	root store	ami	ec2 command
ap-northeast-1	64-bit	ebs	Launch ami-c9109bc8	<code>ec2-run-instances ami-c9109bc8 -t t1.micro --region ap-northeast-1 --key \${EC2_KEYPAIR_AP_NORTHEAST_1}</code>
ap-northeast-1	64-bit	instance	Launch ami-bd109bbc	<code>ec2-run-instances ami-bd109bbc -t m1.small --region ap-northeast-1 --key \${EC2_KEYPAIR_AP_NORTHEAST_1}</code>
ap-northeast-1	32-bit	ebs	Launch ami-c7109bc6	<code>ec2-run-instances ami-c7109bc6 -t t1.micro --region ap-northeast-1 --key \${EC2_KEYPAIR_AP_NORTHEAST_1}</code>
ap-northeast-1	32-bit	instance	Launch ami-23109b22	<code>ec2-run-instances ami-23109b22 -t m1.small --region ap-northeast-1 --key \${EC2_KEYPAIR_AP_NORTHEAST_1}</code>
ap-southeast-1	64-bit	ebs	Launch ami-b0eda3e2	<code>ec2-run-instances ami-b0eda3e2 -t t1.micro --region ap-southeast-1 --key \${EC2_KEYPAIR_AP_SOUTHEAST_1}</code>
ap-southeast-1	64-bit	instance	Launch ami-8aeda3d8	<code>ec2-run-instances ami-8aeda3d8 -t m1.small --region ap-southeast-1 --key \${EC2_KEYPAIR_AP_SOUTHEAST_1}</code>



Anytime, Anywhere, Anyone
—あらゆる場所で、誰もが使えるOSを

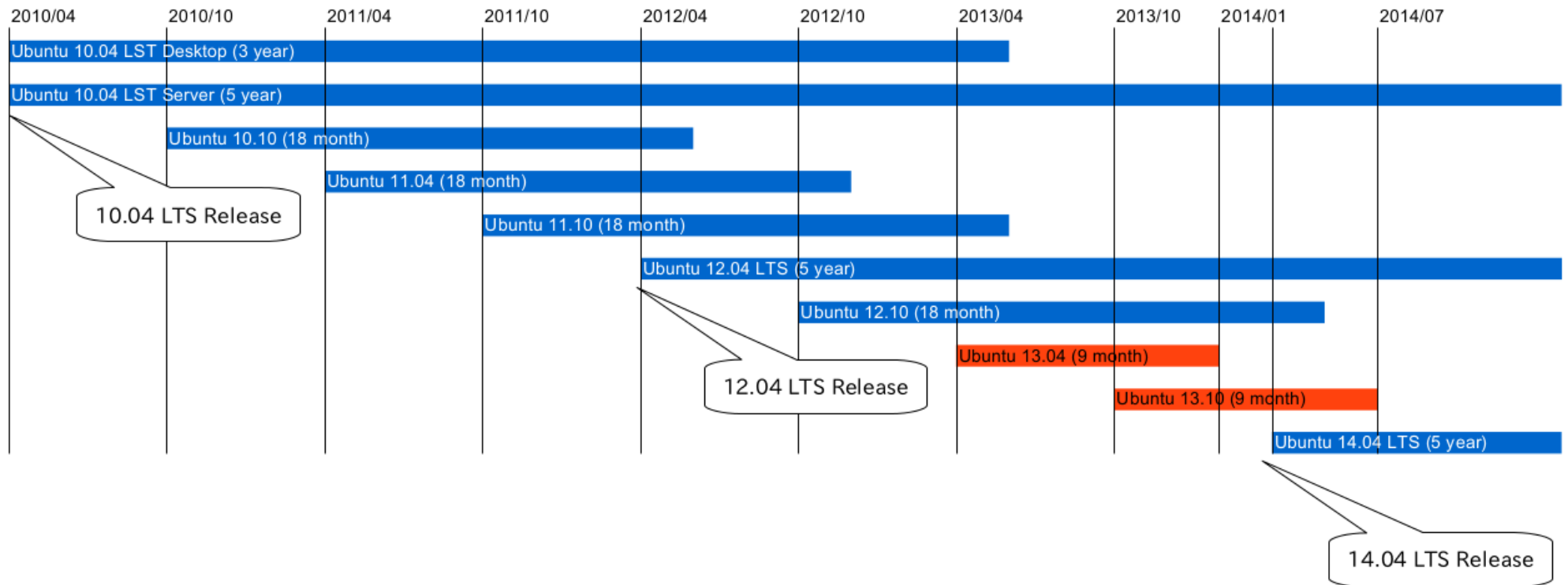
Cutting-Edge Ubuntu

—Ubuntu最新事情



non-LTS support is 9 months

—アップグレードは忘れずに





Replace from X Window System

—Mirディスプレイサーバーの登場

for Next Generation

—次世代Unity, Unity 8登場



Ubuntu Phone



Consider the possibilities!



Ubuntu Phone Apps and Ubuntu SDK

—Ubuntu Touch向けアプリケーション開発環境

Any Question?

—何か質問ある？



Photos

Andy Melton
Bert Kaufmann
CollegeDegrees360
Dan McKay
Daniel Pádua
Dennis van Zuijlekom
Erich_Ferdinand
Johan Larsson
John Baer
Luis Alejandro Bernal Romero
Martin Schmitt
Max Khokhlov
NASA Earth Observatory
NASA Goddard Space Flight Center
Tiffa Day
blumblaum
support
typexnick
usnametaken

Creative Commons Attribution 2.0 Generic