

Desktop

Desktop 1024x768



Konqueror default size with icons only

Be free. - Konqueror

File Edit View Go Bookmarks Settings Window Help

Back Forward Up Reload Stop Home

Konqueror
Be free.

Konqueror is a web browser, file manager and universal document viewer.
[Starting Points](#) · [Introduction](#) · [Tips](#) · [Specifications](#)

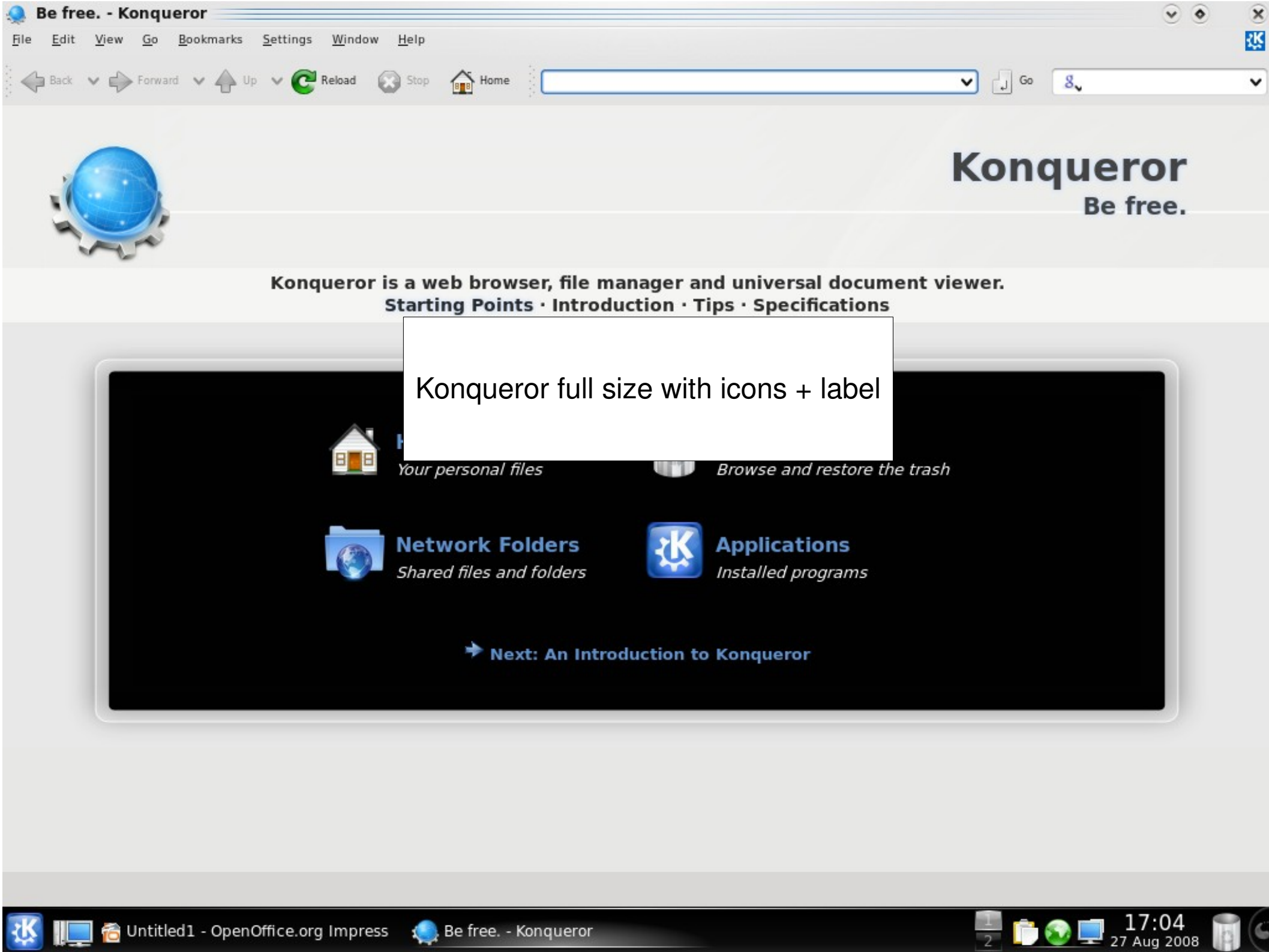
Home Folder
Your personal files

Network Folders
Shared files and folders

Applications
Installed programs

Next: An Introduction to Konqueror

Konqueror default size with icons + label



Konqueror full size with icons + label



Your personal files



Browse and restore the trash

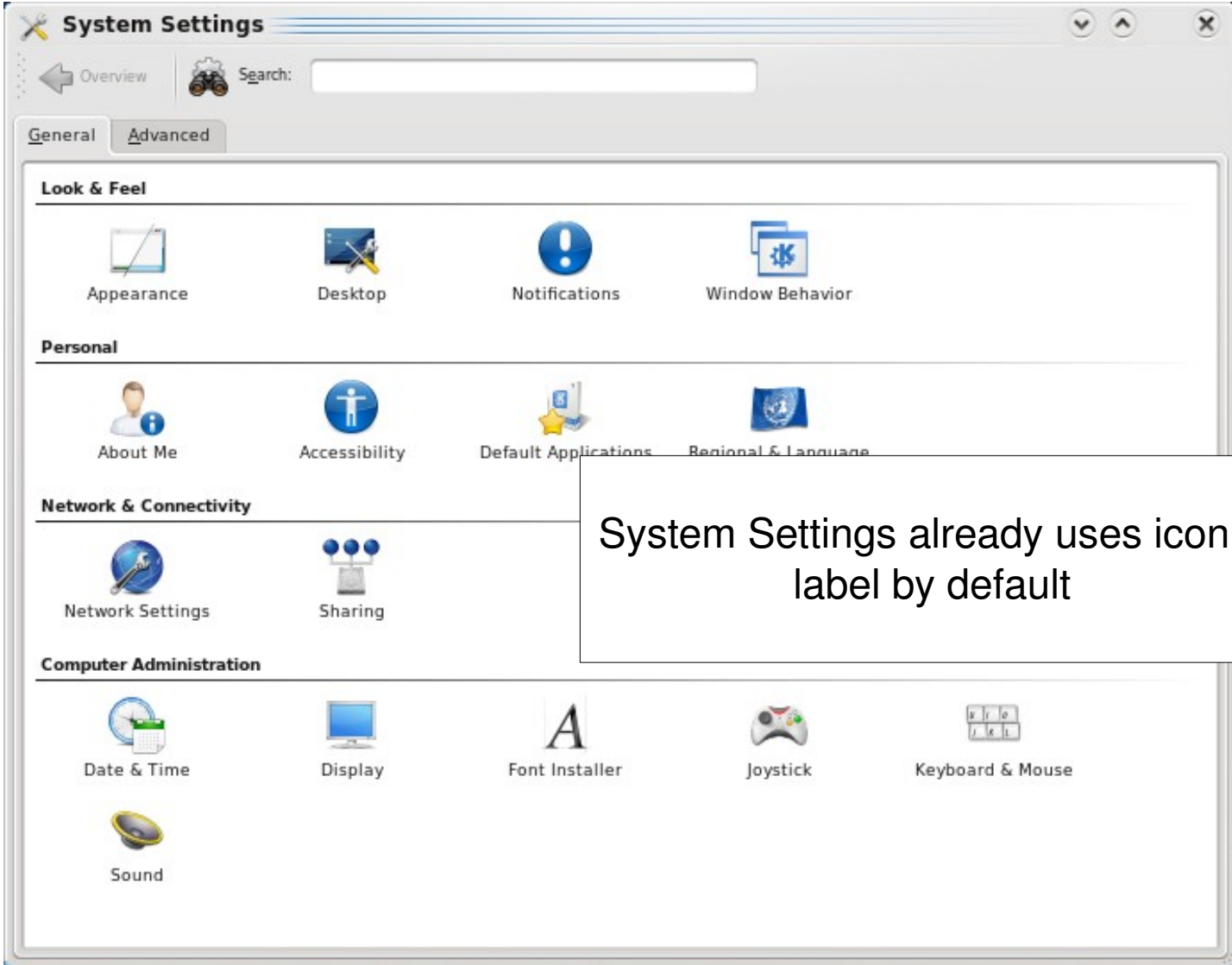


Network Folders
Shared files and folders

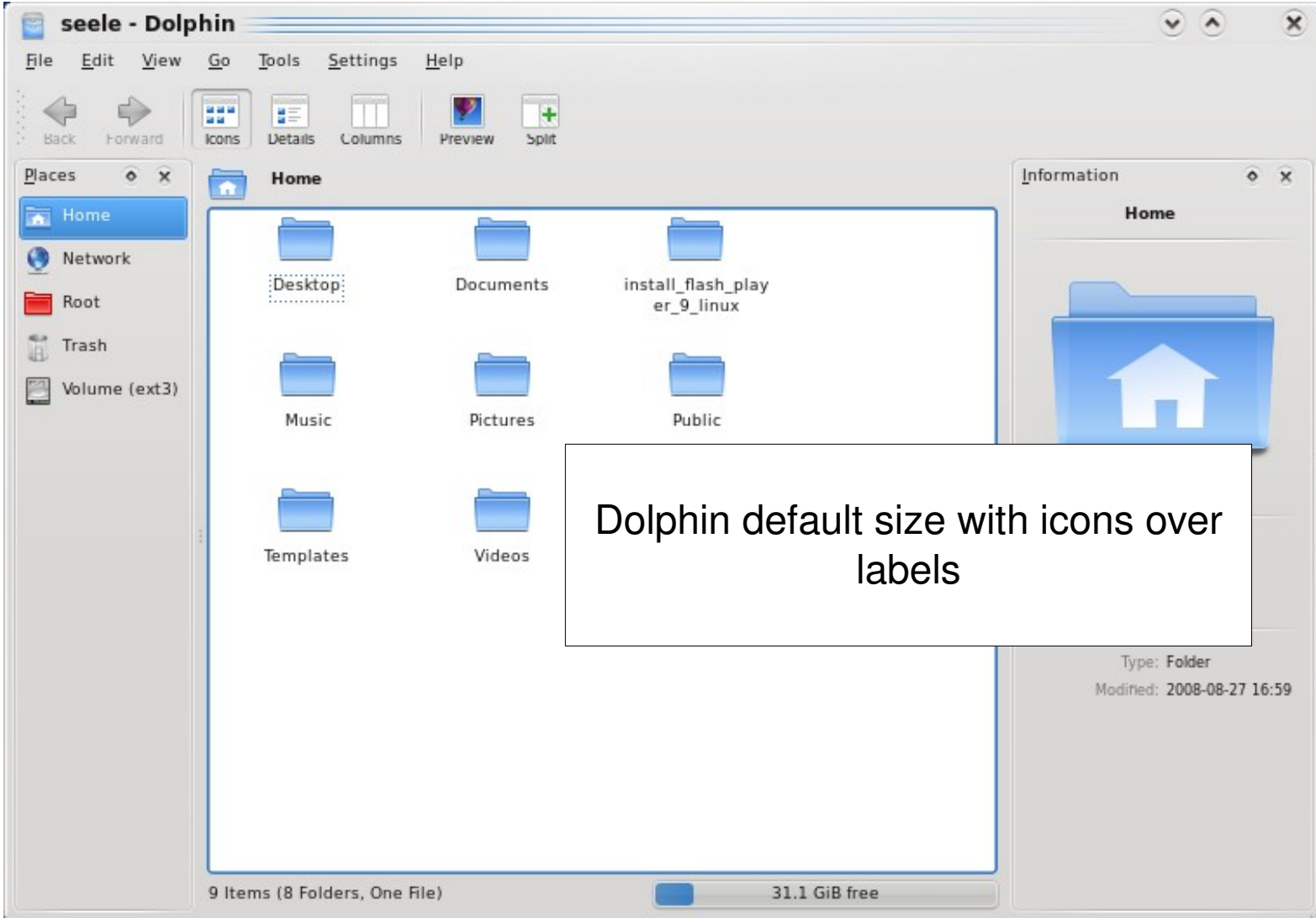


Applications
Installed programs

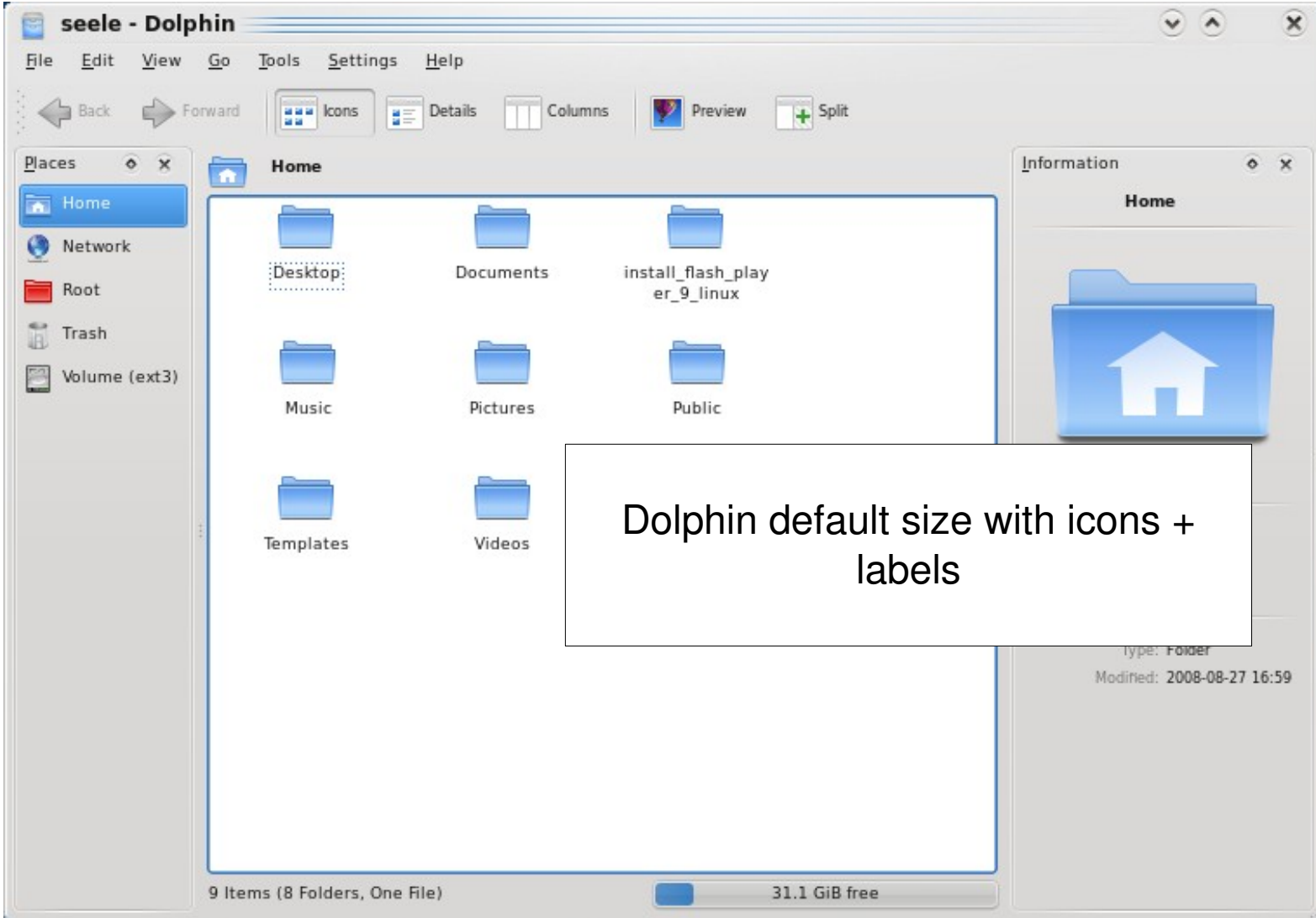
➔ **Next: An Introduction to Konqueror**



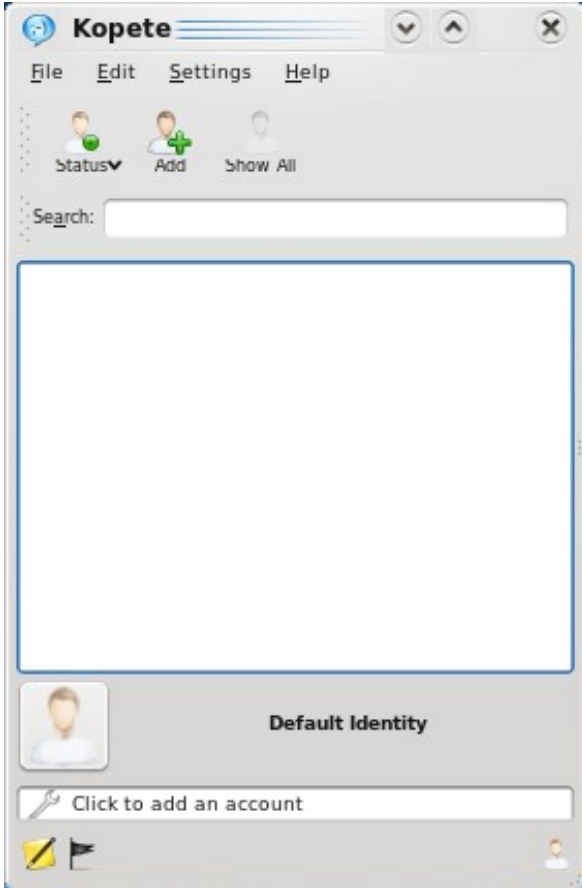
System Settings already uses icon + label by default



Dolphin default size with icons over labels



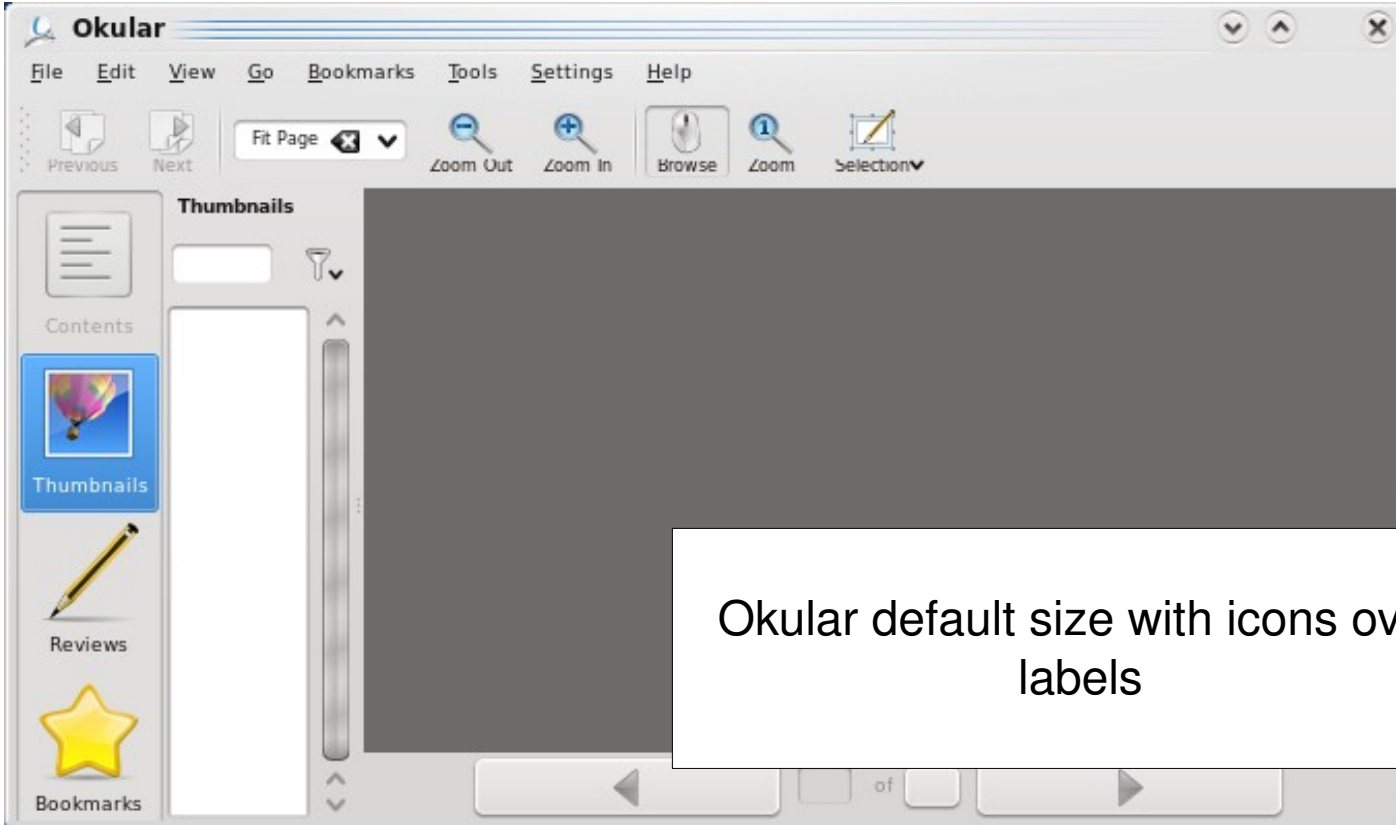
Dolphin default size with icons + labels



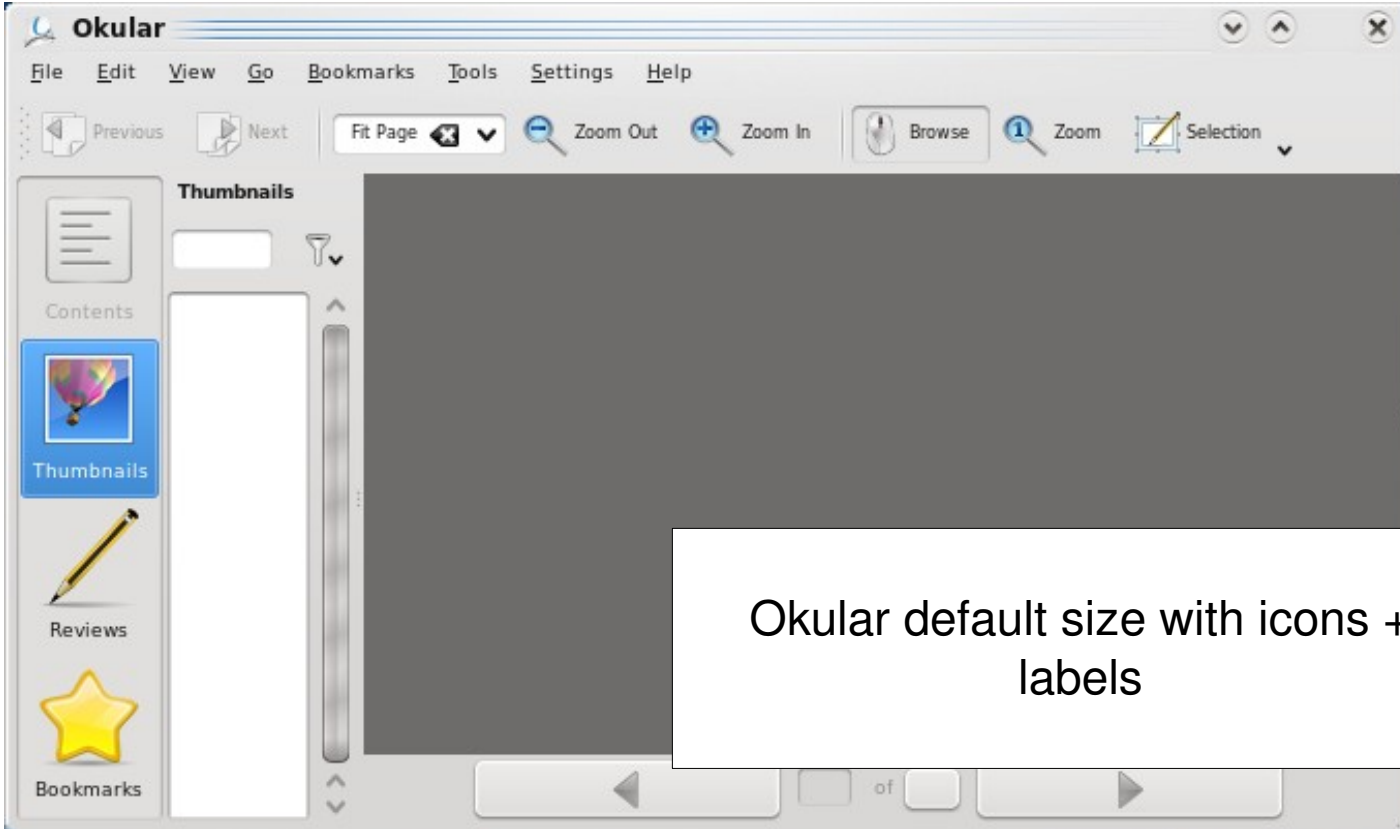
Kopete default size with icons over labels



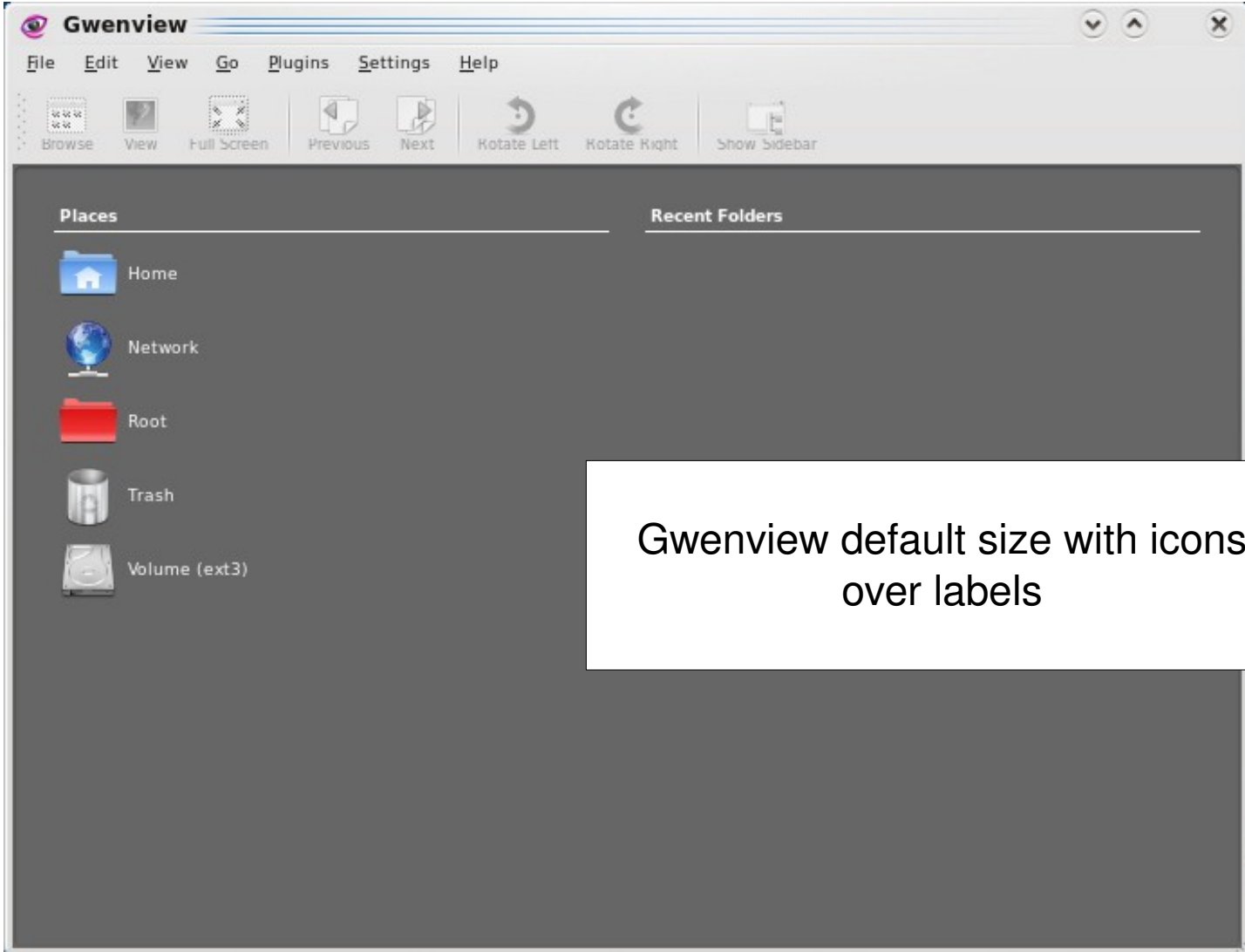
Kopete default size with icons + labels



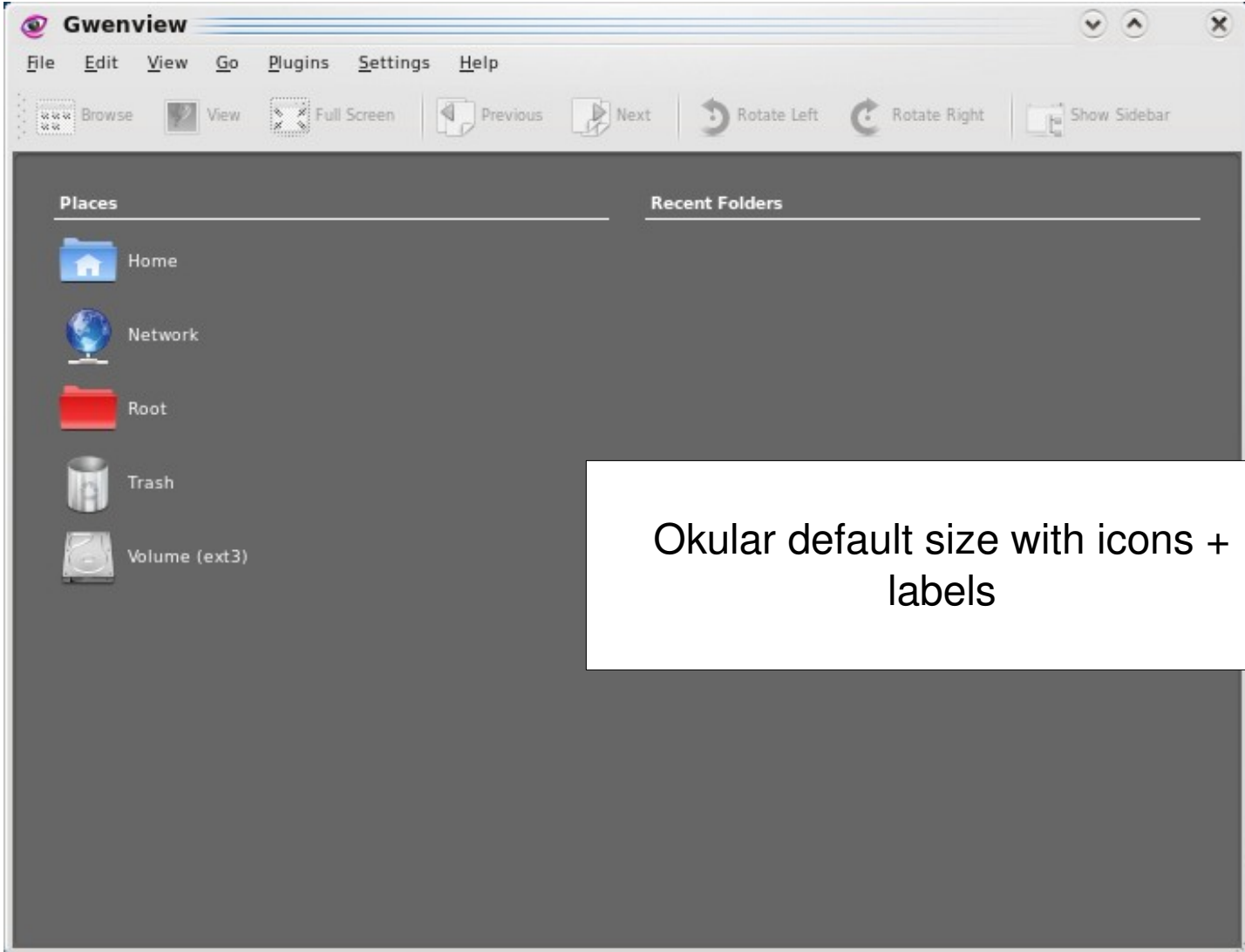
Okular default size with icons over labels



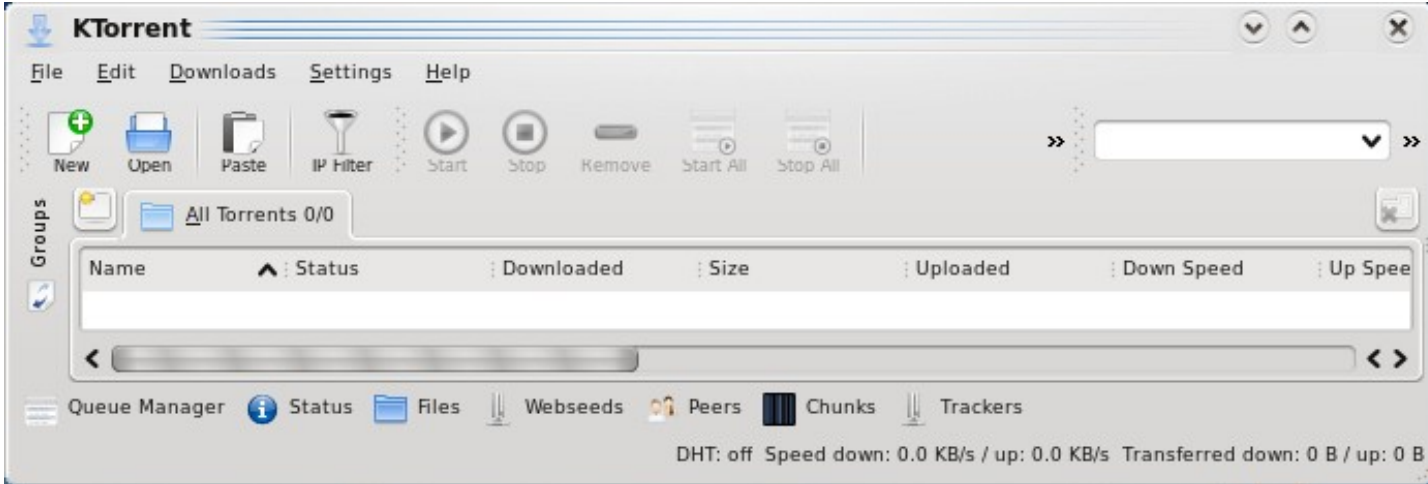
Okular default size with icons + labels



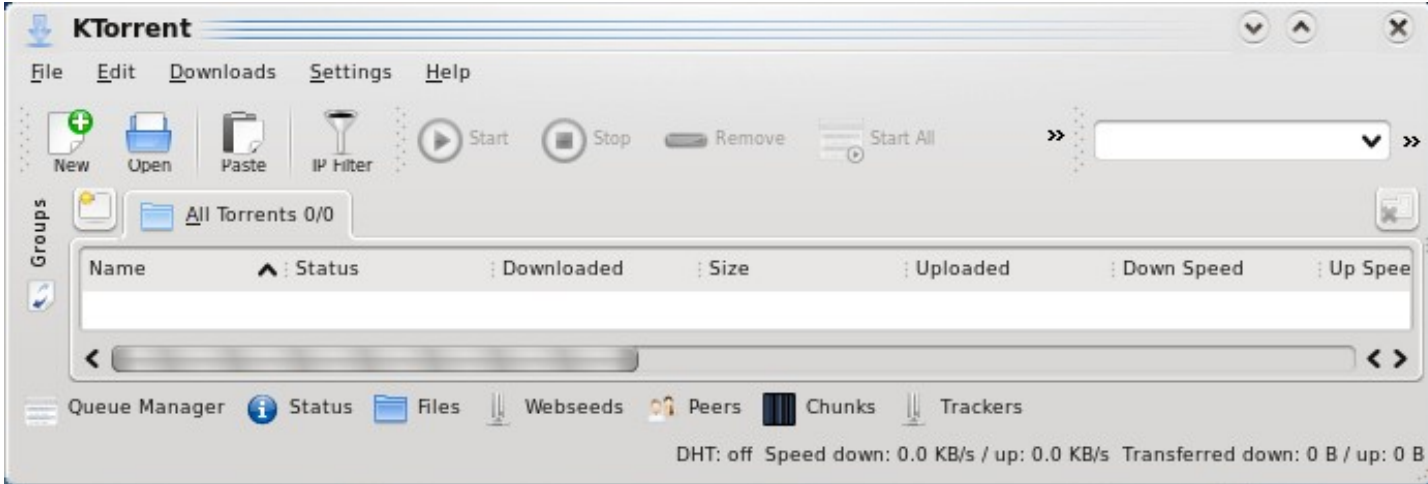
Gwenview default size with icons
over labels



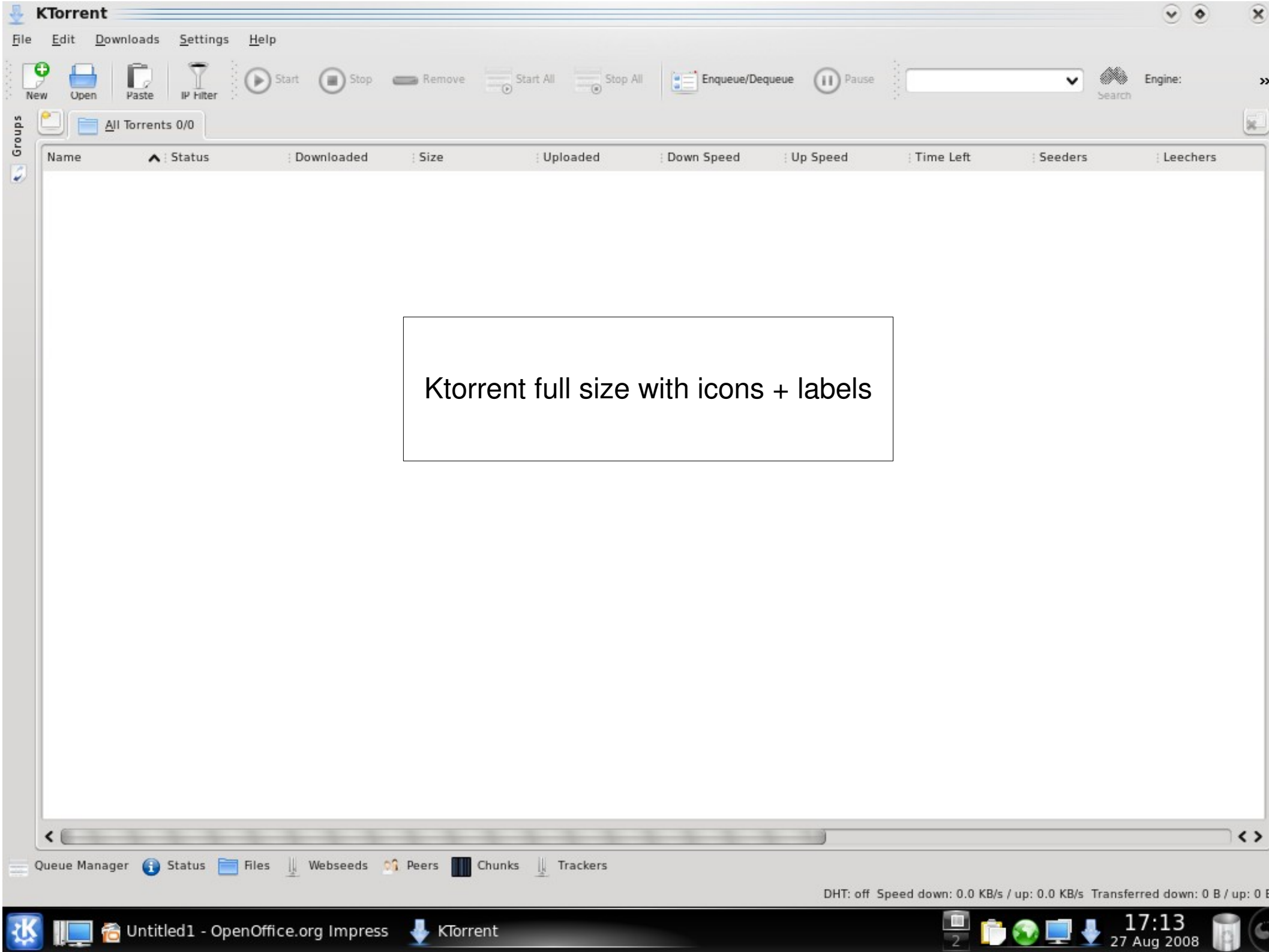
Okular default size with icons +
labels



Ktorrent default size (should be bigger vertically by default) with icons over labels



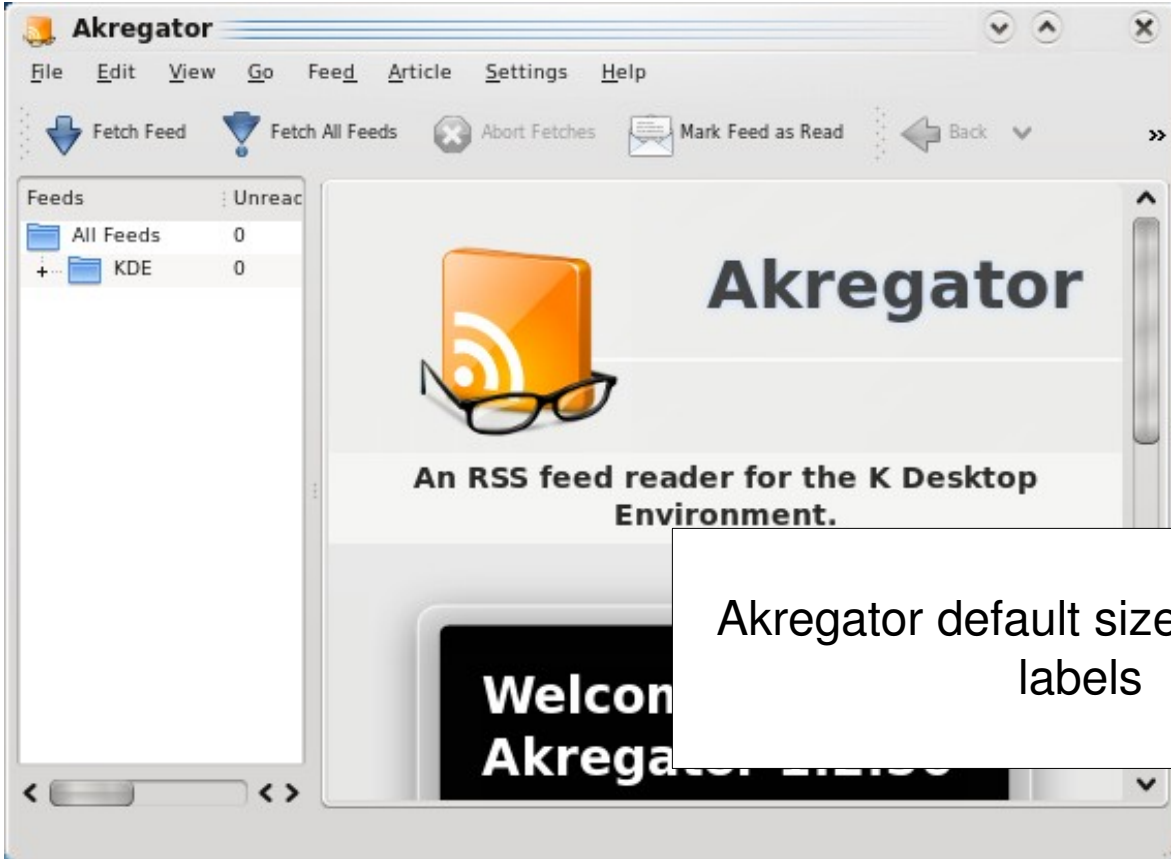
Ktorrent default size with icons + labels



Ktorrent full size with icons + labels



Akregator default size with icons over labels



Akregator default size with icons + labels

Feeds	Unread	Total
All Feeds	0	0
+ KDE	0	0



Akregator

An RSS feed reader for the K Desktop Environment.

Akregator full size with icons + labels

50

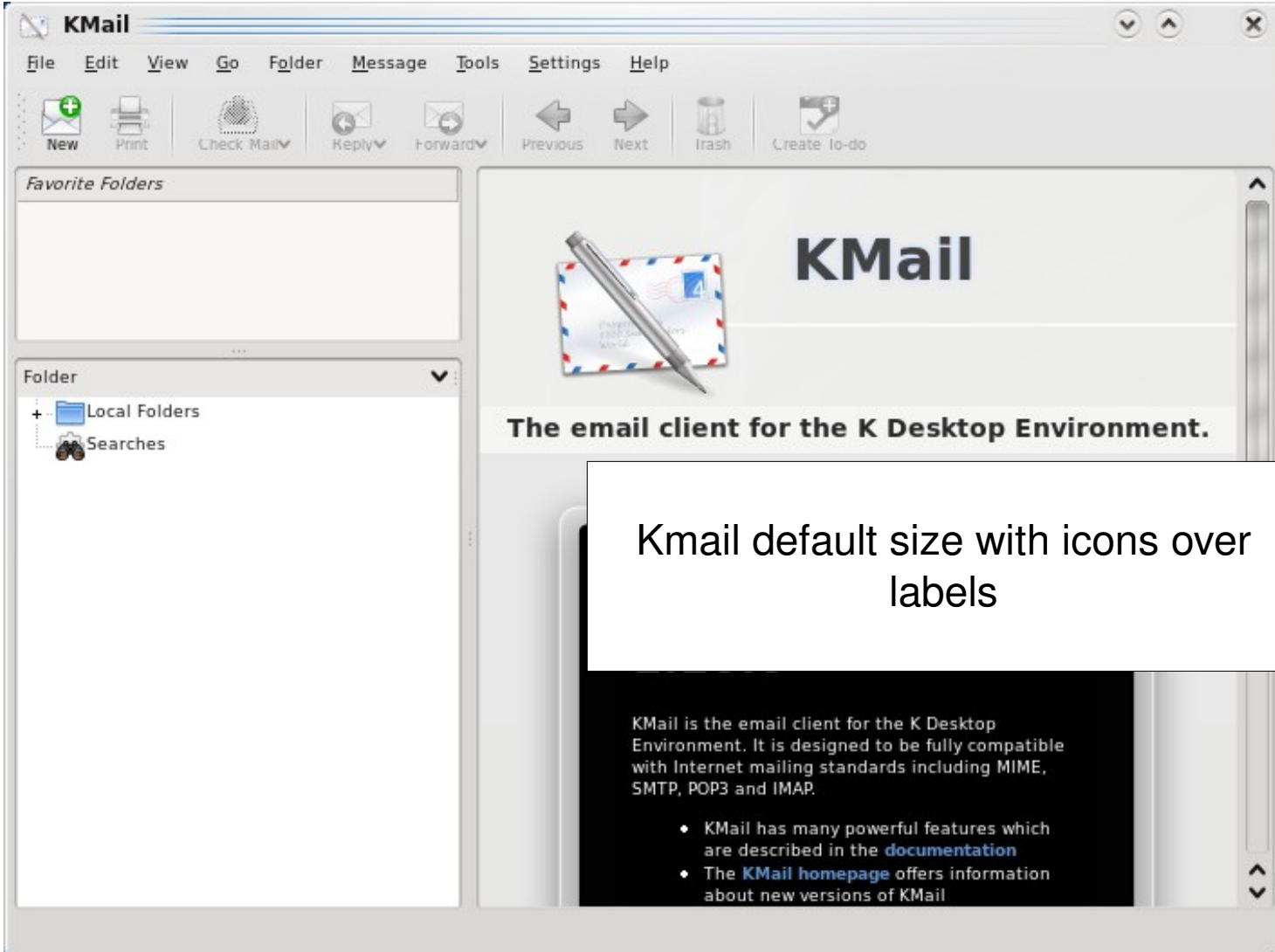
Feed readers provide a convenient way to browse different kinds of content, including news, blogs, and other content from online sites. Instead of checking all your favorite web sites manually for updates, Akregator collects the content for you.

For more information about using Akregator, check the [Akregator website](#). If you do not want to see this page anymore, [click here](#).

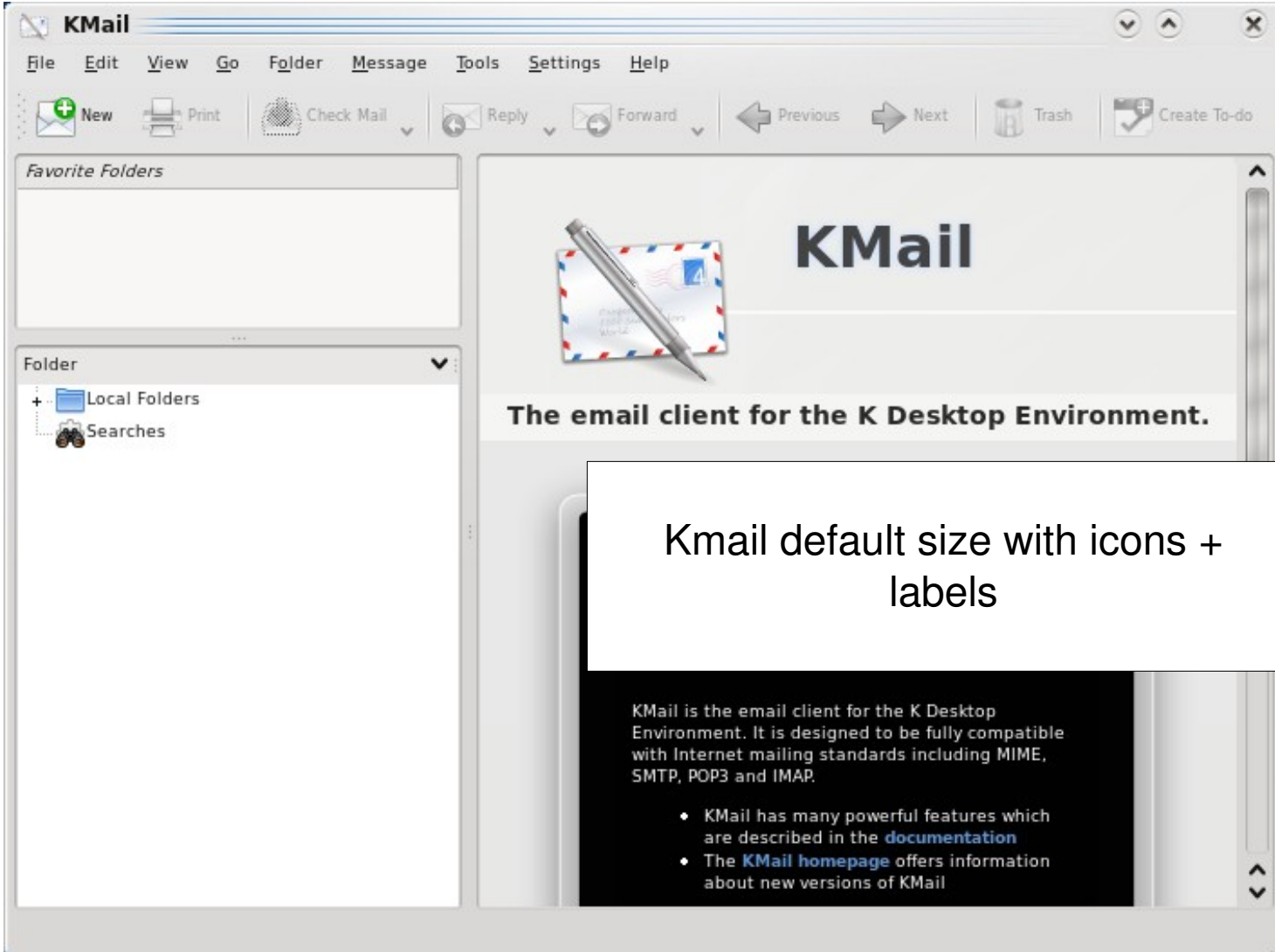
We hope that you will enjoy Akregator.

Thank you,

The Akregator Team



Kmail default size with icons over labels



System Log - KSystemLog

File Edit Logs Window Settings Help

Stop Reload Details System Log Kernel Log Authentication Log Daemons Log X.org Log

Filter: Enter your search here... All

Date	Host	Process	Message
2008-08-27 16:46:32	sebastien	kdm_greet[11265]	Cannot open default user face
2008-08-27 16:46:56	sebastien	init	tty2 main process ended, respawning
2008-08-27 16:46:58	sebastien	acpid	client connected from 4943[0:0]
2008-08-27 16:47:49	sebastien	python	hp-systray(init)[11592]: warning: No hp: or hpfax: devices found in any installed CUPS que...
2008-08-27 17:05:39	sebastien	dhclient	DHCPREQUEST of 192.168.1.39 on eth0 to 192.168.1.1 port 67
2008-08-27 17:05:39	sebastien	dhclient	DHCPACK of 192.168.1.39 from 192.168.1.1
2008-08-27 17:05:39	sebastien	dhclient	bound to 192.168.1.39 -- renewal in 37611 seconds.
2008-08-27 17:15:41	sebastien	syslog	
2008-08-27 17:17:01	sebastien	/USR/SBIN/CRON[11772]	
2008-08-27 17:17:53	sebastien	klogd	
2008-08-27 17:17:53	sebastien	hp	
2008-08-27 17:17:53	sebastien	klogd	
2008-08-27 17:17:53	sebastien	klogd	
2008-08-27 17:17:53	sebastien	klogd	
2008-08-27 17:17:53	sebastien	klogd	[105757.986017] __ratelimit: 3 messages suppressed
2008-08-27 17:17:53	sebastien	klogd	[105757.986032] type=1503 audit(1219871873.402:27): operation="inode_permission" r...
2008-08-27 17:17:54	sebastien	klogd	[105759.014240] type=1503 audit(1219871874.430:28): operation="inode_permission" r...
2008-08-27 17:17:54	sebastien	klogd	[105759.015226] type=1503 audit(1219871874.430:29): operation="socket_create" famil...
2008-08-27 17:17:54	sebastien	klogd	[105759.015785] type=1503 audit(1219871874.430:30): operation="socket_create" famil...
2008-08-27 17:17:54	sebastien	klogd	[105759.016416] type=1503 audit(1219871874.434:31): operation="socket_create" famil...
2008-08-27 17:17:54	sebastien	klogd	[105759.016971] type=1503 audit(1219871874.434:32): operation="socket_create" famil...
2008-08-27 17:17:54	sebastien	klogd	[105759.017513] type=1503 audit(1219871874.434:33): operation="socket_create" famil...
2008-08-27 17:17:54	sebastien	klogd	[105759.018072] type=1503 audit(1219871874.434:34): operation="socket_create" famil...
2008-08-27 17:17:54	sebastien	klogd	[105759.018616] type=1503 audit(1219871874.434:35): operation="socket_create" famil...
2008-08-27 17:17:54	sebastien	klogd	[105759.019160] type=1503 audit(1219871874.434:36): operation="socket_create" famil...
2008-08-27 17:17:55	sebastien	klogd	[105759.648110] ppdev0: registered pardevice
2008-08-27 17:17:55	sebastien	python	io/hpnmud/pp.c 627: unable to read device-id ret=-1
2008-08-27 17:17:55	sebastien	klogd	[105759.607371] ppdev0: unregistered pardevice

104 lines. 17:23:12: Log successfully loaded. Last updated: 17:23:12.

KsystemLog default size with icons over labels

System Log - KSystemLog

File Edit Logs Window Settings Help

Stop Reload Details System Log Kernel Log Authentication Log Daemons Log X.org Log

Filter: Enter your search here... All

Date	Host	Process	Message
2008-08-27 16:46:32	sebastien	kdm_greet[11265]	Cannot open default user face
2008-08-27 16:46:56	sebastien	init	tty2 main process ended, respawning
2008-08-27 16:46:58	sebastien	acpid	client connected from 4943[0:0]
2008-08-27 16:47:49	sebastien	python	hp-systray(init)[11592]: warning: No hp: or hpfax: devices found in any installed CUPS que...
2008-08-27 17:05:39	sebastien	dhclient	DHCPREQUEST of 192.168.1.39 on eth0 to 192.168.1.1 port 67
2008-08-27 17:05:39	sebastien	dhclient	DHCPACK of 192.168.1.39 from 192.168.1.1
2008-08-27 17:05:39	sebastien	dhclient	bound to 192.168.1.39 -- renewal in 37611 seconds.
2008-08-27 17:15:41	sebastien	syslog	
2008-08-27 17:17:01	sebastien	/USR/SBIN/CRON[11772]	
2008-08-27 17:17:53	sebastien	klogd	
2008-08-27 17:17:53	sebastien	hp	
2008-08-27 17:17:53	sebastien	klogd	
2008-08-27 17:17:53	sebastien	klogd	
2008-08-27 17:17:53	sebastien	klogd	
2008-08-27 17:17:53	sebastien	klogd	[105757.900017] __ratemim: 3 messages suppressed
2008-08-27 17:17:53	sebastien	klogd	[105757.986032] type=1503 audit(119871873.402:27): operation="inode_permission" r...
2008-08-27 17:17:54	sebastien	klogd	[105759.014240] type=1503 audit(1219871874.430:28): operation="inode_permission" r...
2008-08-27 17:17:54	sebastien	klogd	[105759.015226] type=1503 audit(1219871874.430:29): operation="socket_create" famil...
2008-08-27 17:17:54	sebastien	klogd	[105759.015785] type=1503 audit(1219871874.430:30): operation="socket_create" famil...
2008-08-27 17:17:54	sebastien	klogd	[105759.016416] type=1503 audit(1219871874.434:31): operation="socket_create" famil...
2008-08-27 17:17:54	sebastien	klogd	[105759.016971] type=1503 audit(1219871874.434:32): operation="socket_create" famil...
2008-08-27 17:17:54	sebastien	klogd	[105759.017513] type=1503 audit(1219871874.434:33): operation="socket_create" famil...
2008-08-27 17:17:54	sebastien	klogd	[105759.018072] type=1503 audit(1219871874.434:34): operation="socket_create" famil...
2008-08-27 17:17:54	sebastien	klogd	[105759.018616] type=1503 audit(1219871874.434:35): operation="socket_create" famil...
2008-08-27 17:17:54	sebastien	klogd	[105759.019160] type=1503 audit(1219871874.434:36): operation="socket_create" famil...
2008-08-27 17:17:55	sebastien	klogd	[105759.648110] ppdev0: registered pardevice
2008-08-27 17:17:55	sebastien	python	io/hpmd/pp.c 627: unable to read device-id ret=-1
2008-08-27 17:17:55	sebastien	klogd	[105759.697757] ppdev0: unregistered pardevice

104 lines. 17:23:12: Log successfully loaded. Last updated: 17:23:12.

KsystemLog default size with icons + labels

KDE User Manager - KUser

File User Group Settings Help

Add Edit Delete Add Edit Delete Reload

Users Groups

UID	User Login	Full Name
0	root	root
1	daemon	daemon
2	bin	bin
3	sys	sys
4	sync	sync
5	games	games
6	man	man
7	lp	lp

Ready

Kuser default size (should be larger by default) with icons over labels



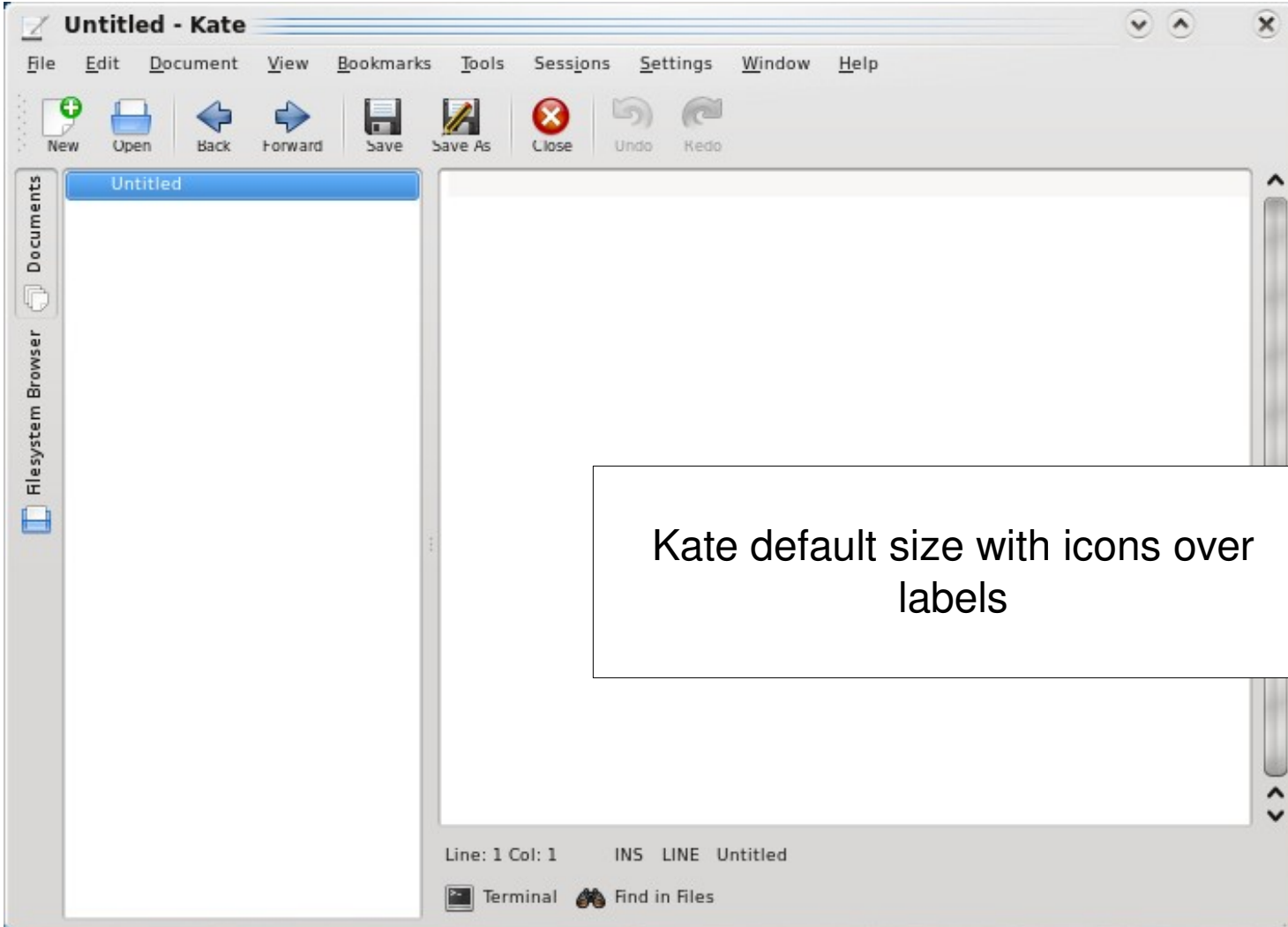
Kuser default size with icons + labels



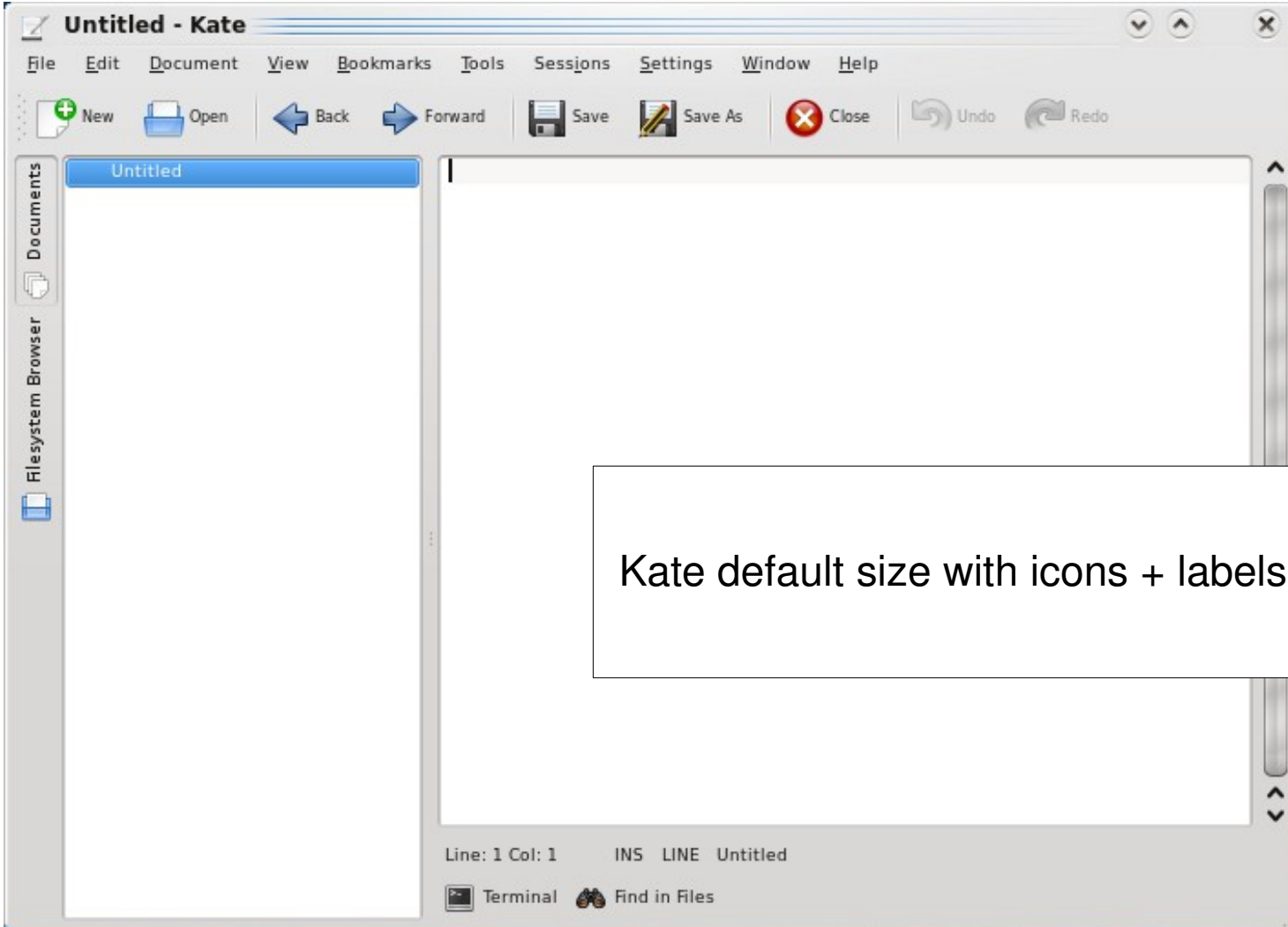
Users Groups

UID	User Login	Full Name	Home Directory	Login Shell
0	root	root	/root	/bin/bash
1	daemon	daemon	/usr/sbin	/bin/sh
2	bin	bin	/bin	/bin/sh
3	sys	sys	/dev	/bin/sh
4	sync	sync	/bin	/bin/sync
5	games	games	/usr/games	/bin/sh
6	man	man	/var/cache/man	/bin/sh
7	lp	lp	/var/spool/lpd	/bin/sh
8	mail	mail	/var/mail	/bin/sh
9	news	news	/va	
10	uucp	uucp	/va	
13	proxy	proxy	/bi	
33	www-data	www-data	/va	
34	backup	backup	/va	
38	list	Mailing List Mana...	/va	
39	irc	ircd	/va	
41	gnats	Gnats Bug-Report...	/va	
100	libuuid		/var/lib/uuid	/bin/sh
101	syslog		/home/syslog	/bin/false
102	klog		/home/klog	/bin/false
103	avahi-autoipd	Avahi autoip dae...	/var/lib/avahi-aut...	/bin/false
104	saned		/home/saned	/bin/false
105	messagebus		/var/run/dbus	/bin/false
106	avahi	Avahi mDNS dae...	/var/run/avahi-da...	/bin/false
107	polkituser	PolicyKit	/var/run/PolicyKit	/bin/false
108	haldaemon	Hardware abstra...	/var/run/hald	/bin/false
109	hplip	HPLIP system user	/var/run/hplip	/bin/false
1000	seele	seele	/home/seele	/bin/bash
65534	nobody	nobody	/nonexistent	/bin/sh

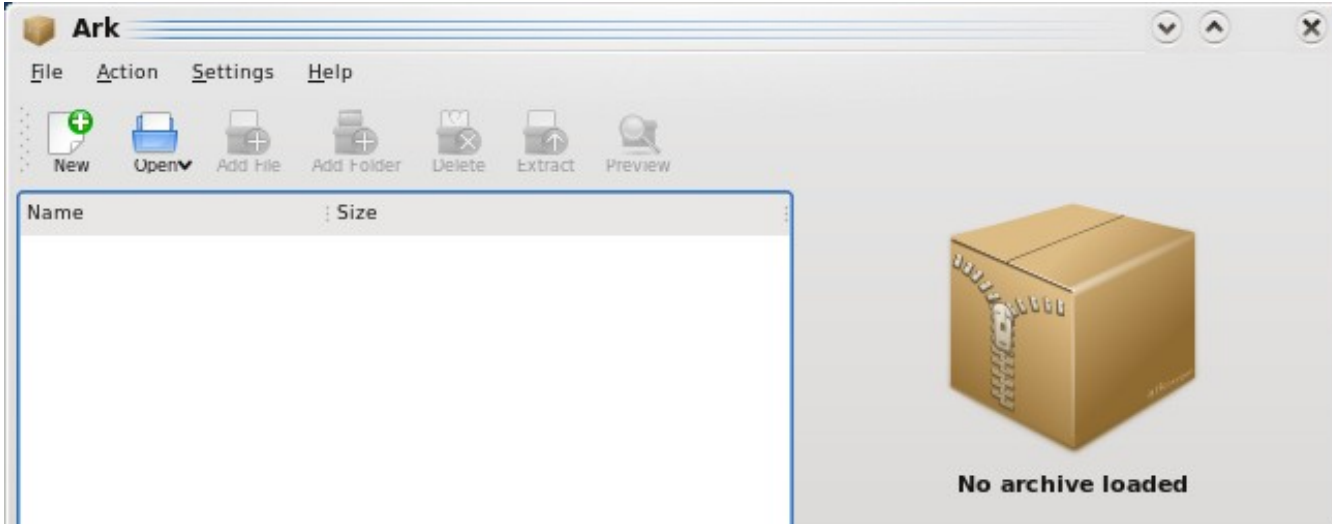
Kuser full size with icons + labels (a larger default size would fit the icons + labels without resize)



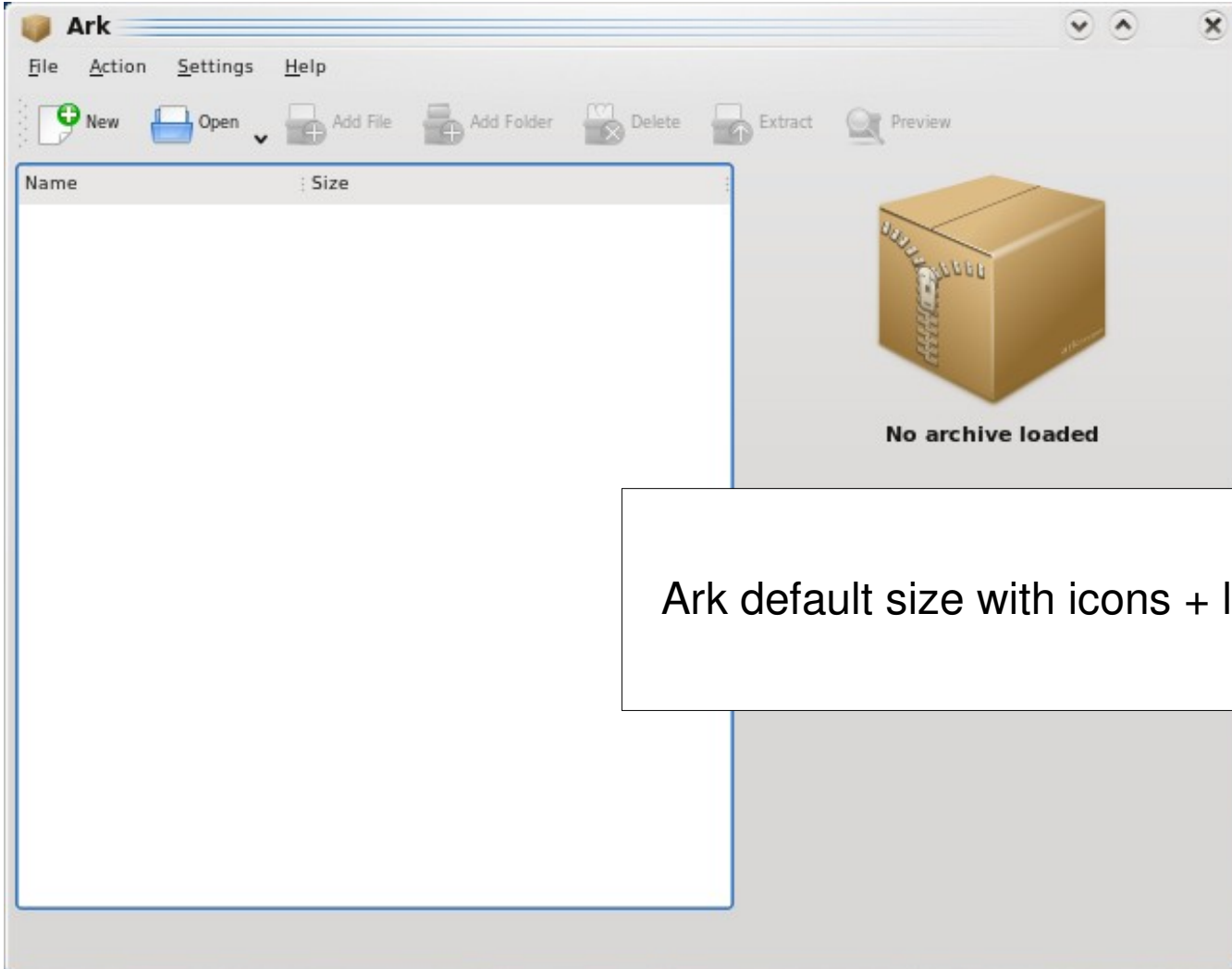
Kate default size with icons over labels



Kate default size with icons + labels



Ark default size with icons over labels



Ark default size with icons + labels


Start Page - KDE Help Center

File Edit View Go Settings Help

Table of Contents Back Forward Print Frame Copy Find Increase Font Sizes Decrease Font Sizes

Search

KDE Help Center



- ◆ [Welcome to KDE](#)
- ◆ [Kioslaves](#)
 - ◇ [ar](#)
 - ◇ [audiocd](#)
 - ◇ [bzip](#)
 - ◇ [bzip2](#)
 - ◇ [cgi](#)
 - ◇ [data](#)
 - ◇ [file](#)
 - ◇ [finger](#)
 - ◇ [fish](#)
 - ◇ [floppy](#)

help:/khelpcenter/index.html?anchor=welcome

KDE Help default size with icons over labels

Start Page - KDE Help Center

File Edit View Go Settings Help

Table of Contents Back Forward Print Frame Copy Find Increase Font Sizes Decrease Font Sizes

Search

Contents Glossary Search

- Welcome to KDE
- KDE Users' Manual
- Application Manuals
- Applet Manuals
- Control Center Modules
- KInfoCenter Modules
- Kioslaves
- Scrollkeeper
- Tutorials
- UNIX manual pages
- Browse Info Pages
- The KDE FAQ
- Contact Information
- KDE on the Web
- Supporting KDE

KDE Help Center

- Welcome to KDE

- Kioslaves
 - ar
 - audiocd
 - bzip
 - bzip2
 - cgi
 - data
 - file
 - finger
 - fish
 - floppy

KDE Help default size with icons + labels